



4
BEDS +
BASEMENT



5
BATHS



2-CAR
GARAGE



5,008
SQ FT

5610 Plantation Ridge

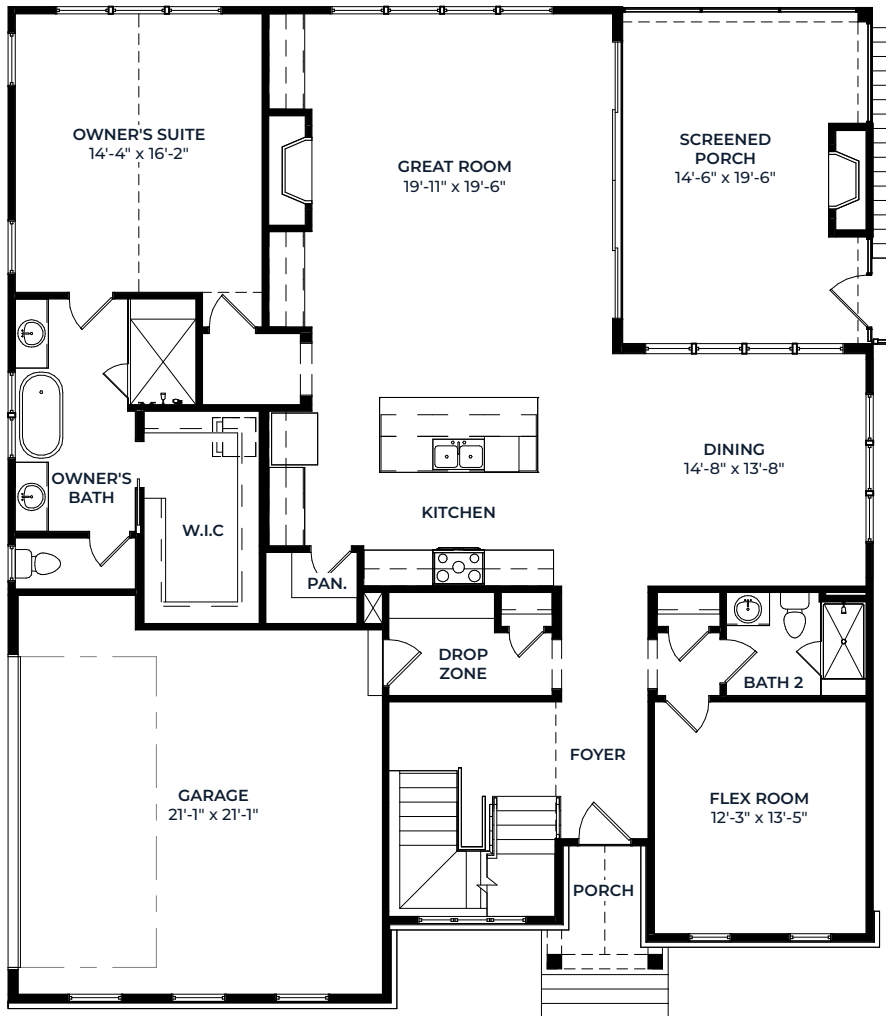


Crafted by Barringer Homes

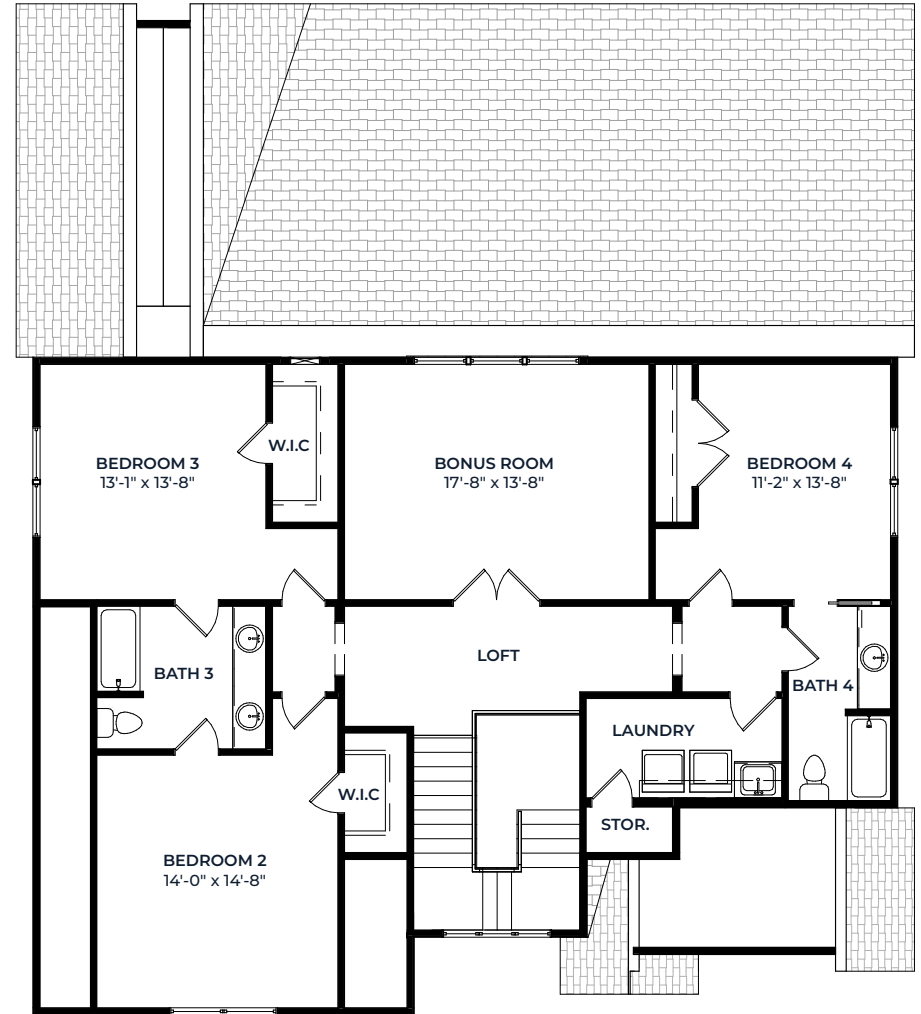
Located on the shores of peaceful Lake Wylie, 5610 Plantation Ridge Road features 5,008 square feet with four bedrooms and a bonus room, five baths, a screened back porch, covered patio and two-car garage on a three-quarter-acre waterfront lot.

Sophisticated details can be found throughout this home including a mahogany front door, craftsman style molding in the foyer, white beams and built-in bookcases in the family room, winter ledge stone fireplace, English oak garage doors, vaulted ceiling shiplap and beams in the master bedroom, a wet bar in the basement and distinctive lighting throughout.

Expansive Floorplans



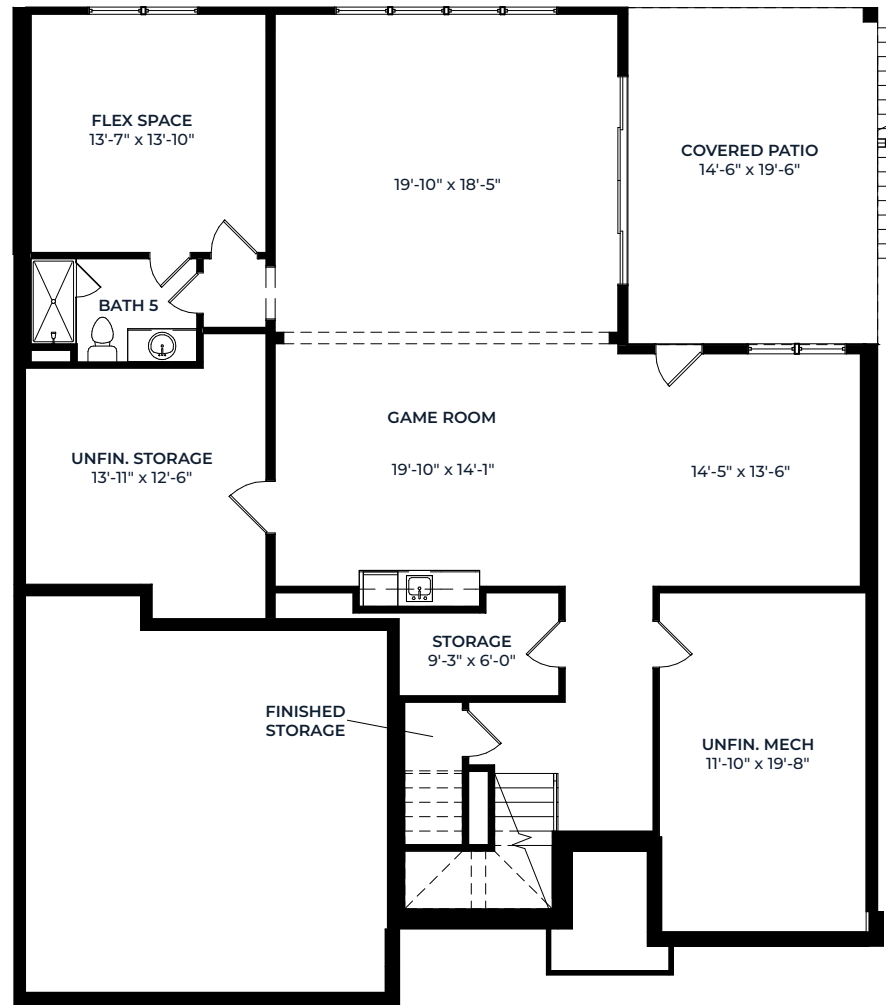
FIRST FLOOR



SECOND FLOOR

***For visual representation only. Items subject to change based on availability.*

Expansive Floorplans



BASEMENT

***For visual representation only. Items subject to change based on availability.*



BARRINGER
— H O M E S —

About Barringer Homes

With a focus on quality craftsmanship and attention to detail, Barringer Homes is a rare luxury homebuilder that provides a high-end, curated product featuring open floor plans and top-of-the-line finishes to the most selective clients. We are a boutique builder with a dedicated and approachable team that strives to anticipate and accommodate a homebuyer's needs throughout the process from start to finish. Together we share the passion vision, and expertise in providing a top-notch customer experience that culminates in the delivery of a house you love to come home to.

SALES CONTACT

KRISTI SMITH
KRISTI@BARRINGER-HOMES.COM
704.307.8712

Barringer-Homes.com

BARRINGER HOMES • BARRINGER