

The Cottages At St George

ONLY 2 HOMES LEFT!



Kristi Smith

kristi@barringer-homes.com

252.917.1830

Andi Zage

andi@barringer-homes.com

704.307.8712

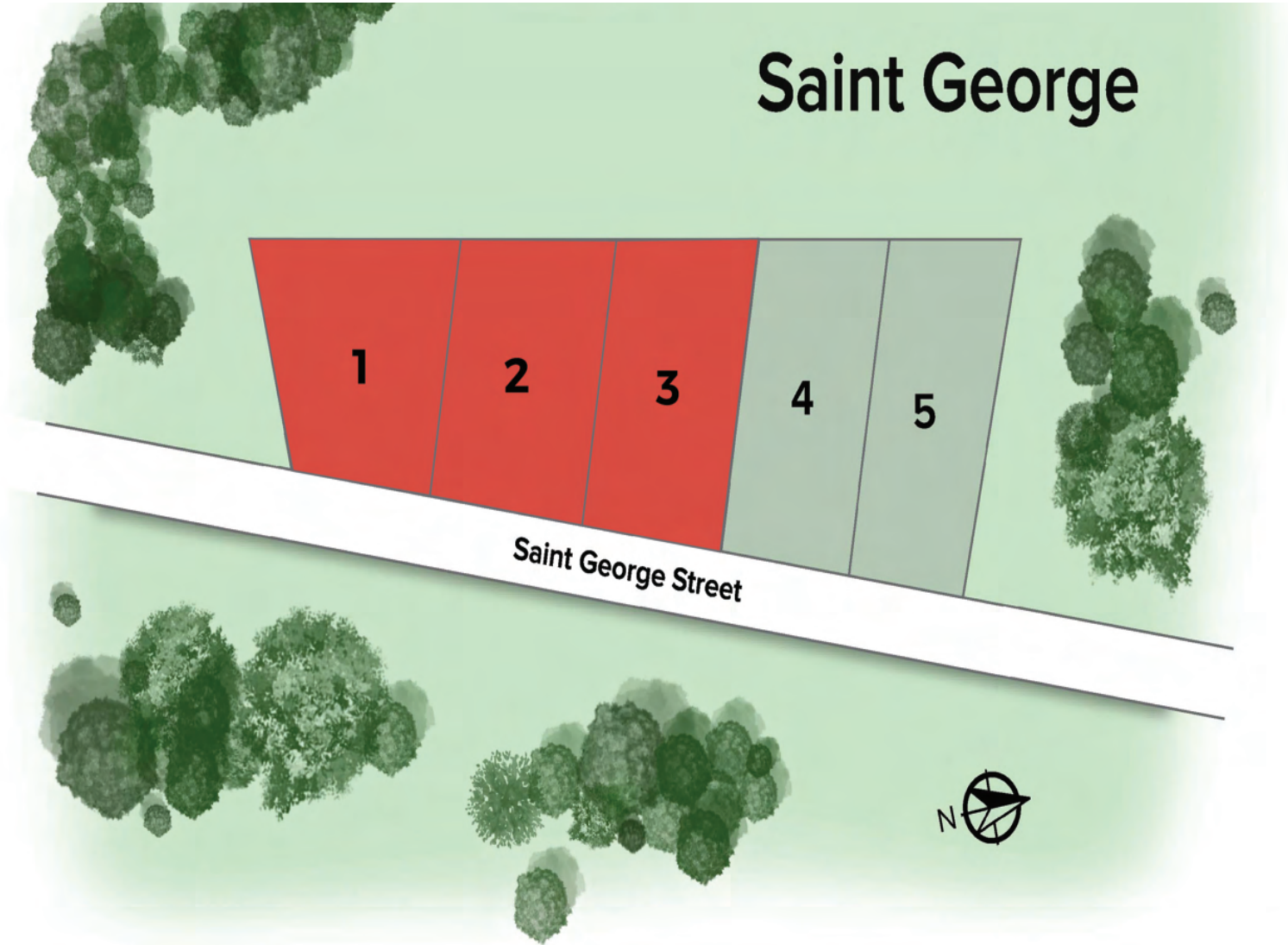


980-284-7007

info@barringer-homes.com

Saint George Drive

SITE MAP



NOW SELLING & COMING SOON



SOLD



BARRINGER
HOMES

980-284-7007

sales@barringer-homes.com

1515 St George (Lot 1)

4 BEDROOMS • 3.5 BATHROOMS • 3,218 SQ FT

SOLD



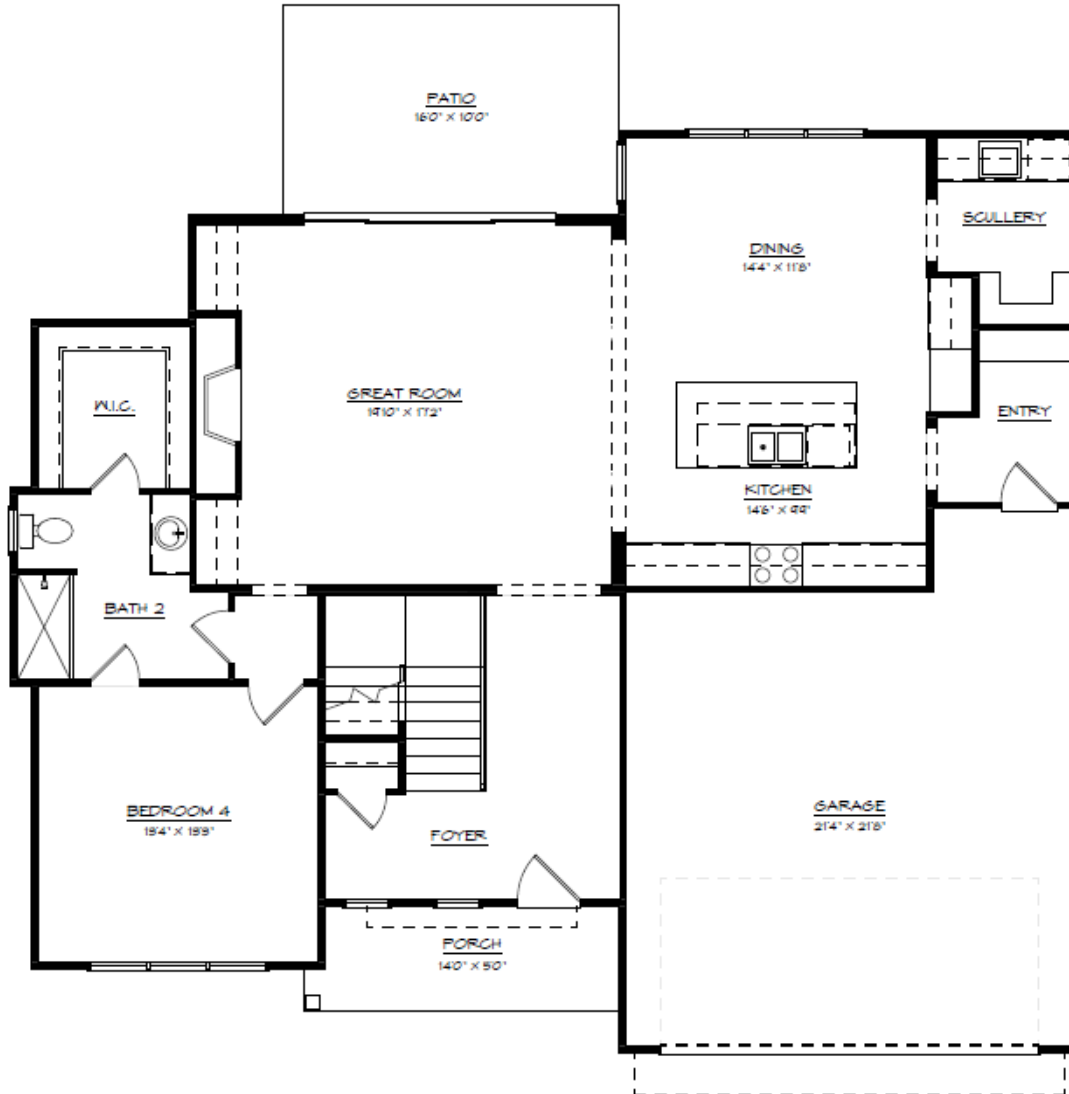
BARRINGER
HOMES

980-284-7007

info@barringer-homes.com

First Floor

4 BEDROOMS • 3.5 BATHROOMS • 3,218 SQ FT



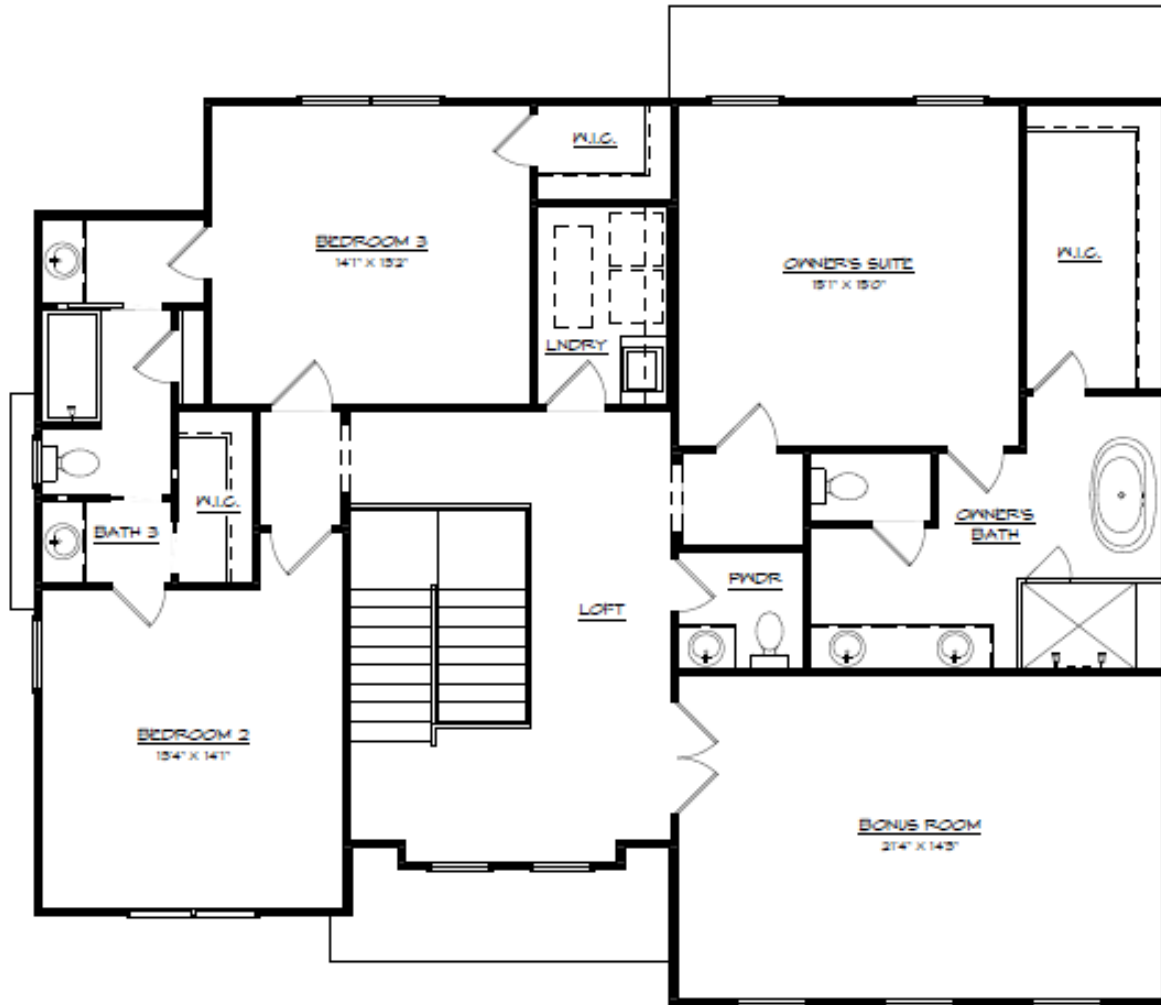
Square Footage

First Floor.....1,399 Sq. Ft.

Second Floor.....1,819 Sq. Ft.

Second Floor

4 BEDROOMS • 3.5 BATHROOMS • 3,218 SQ FT



Square Footage

First Floor.....1,399 Sq. Ft.

Second Floor.....1,819 Sq. Ft.

1519 St George (Lot 2)

4 BEDROOMS • 3.5 BATHROOMS • 3,208 SQ FT

SOLD



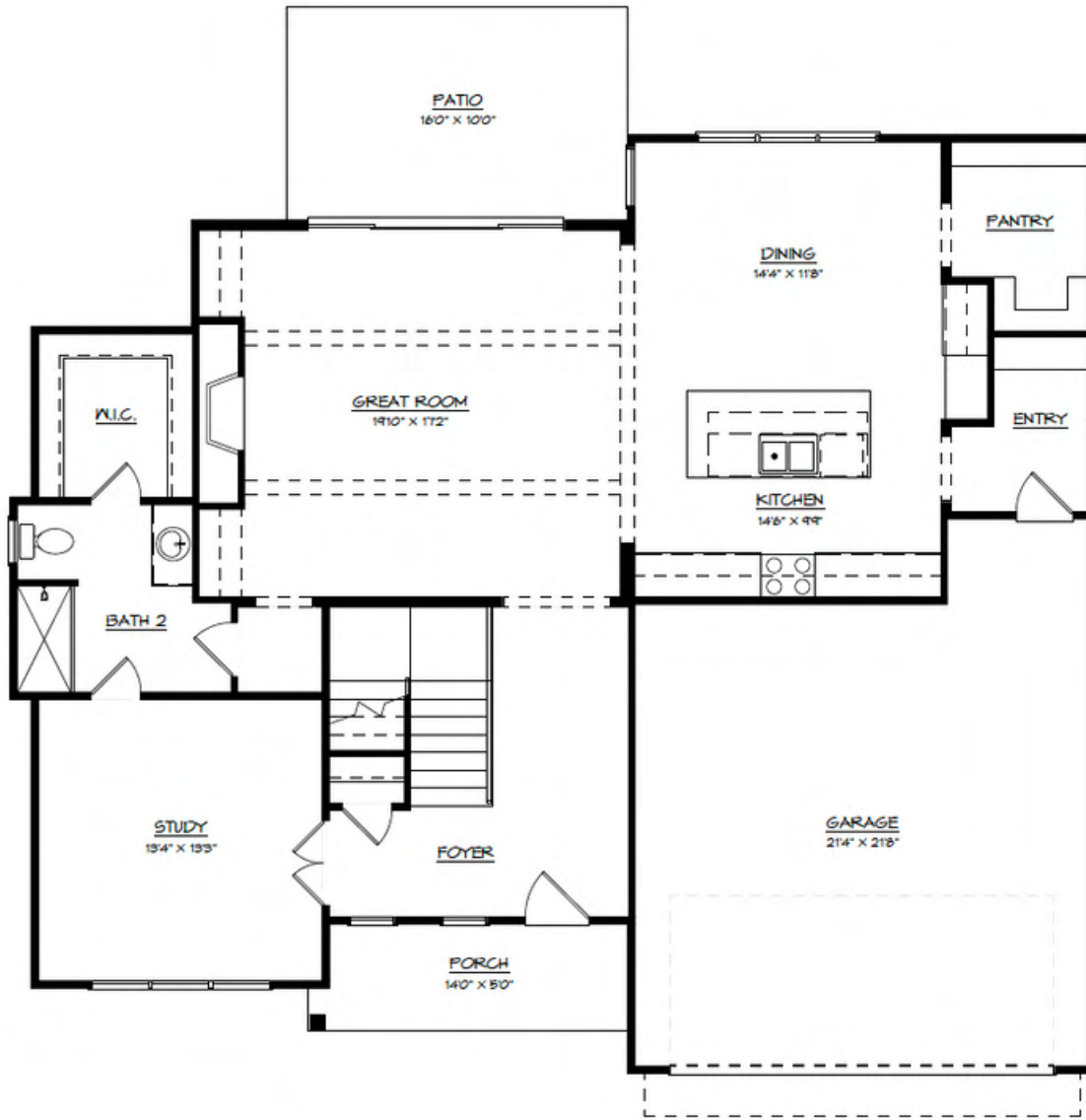
BARRINGER
HOMES

980-284-7007

info@barringer-homes.com

First Floor

4 BEDROOMS • 3.5 BATHROOMS • 3,208 SQ FT



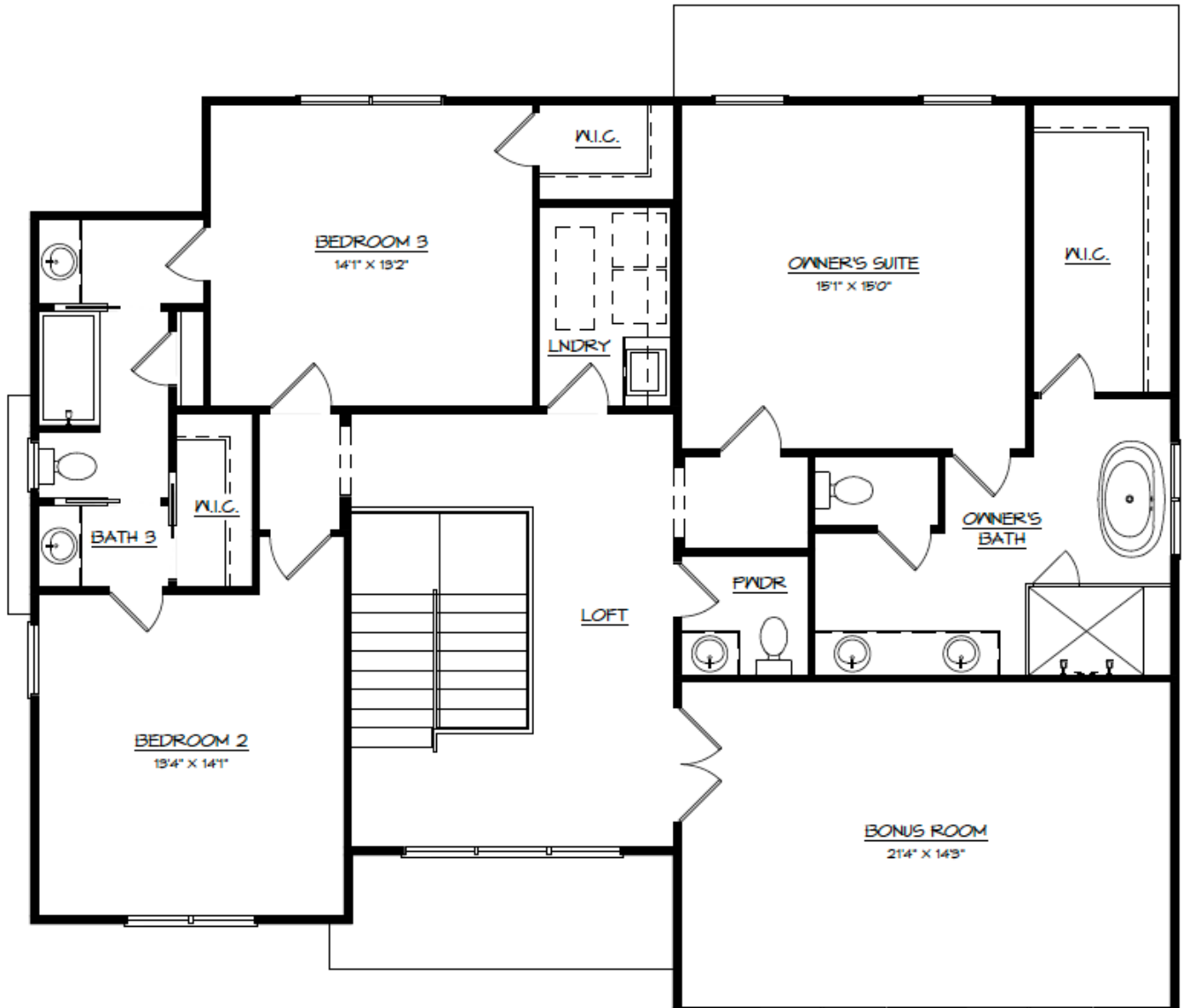
Square Footage

First Floor.....1,399 Sq. Ft.

Second Floor.....1809 Sq. Ft.

Second Floor

4 BEDROOMS • 3.5 BATHROOMS • 3,208 SQ FT



Square Footage

First Floor.....1,399 Sq. Ft.

Second Floor.....1809 Sq. Ft.

1523 St George (Lot 3)

4 BEDROOMS • 4 BATHROOMS • 3,603 SQ FT

SOLD



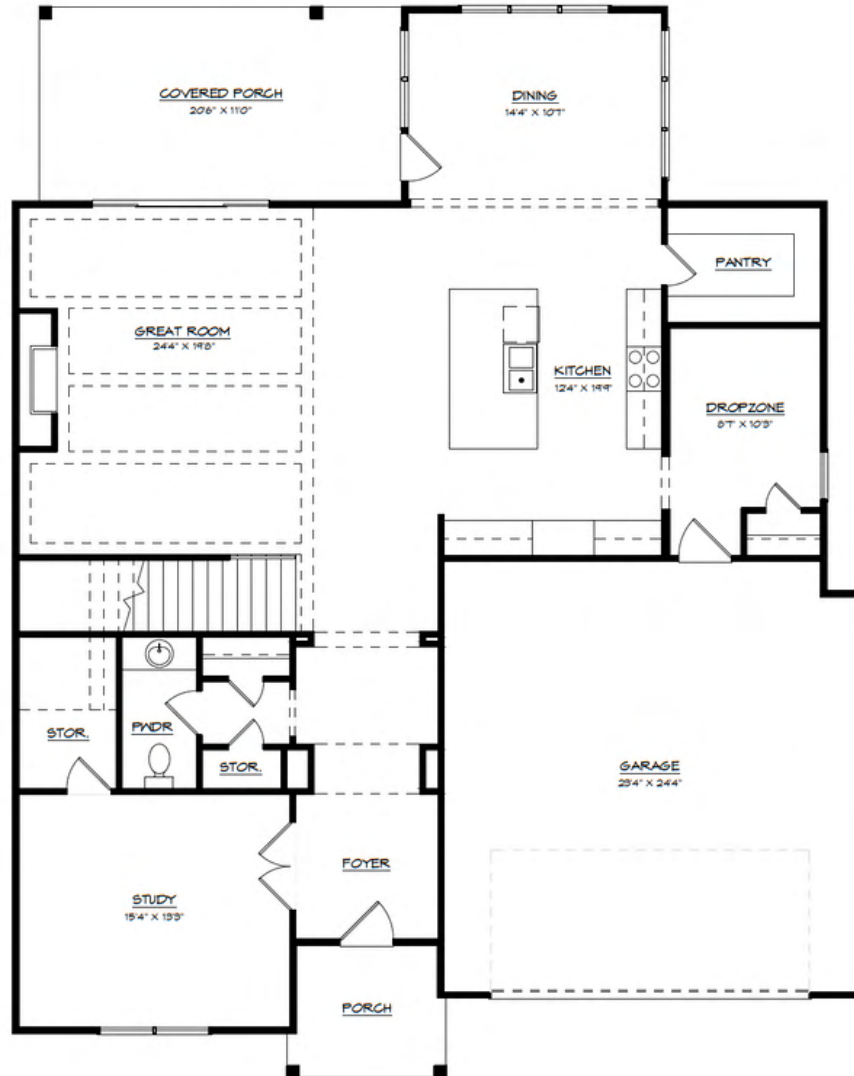
BARRINGER
HOMES

980-284-7007

info@barringer-homes.com

1523 St George

4 BEDROOMS • 4 BATHROOMS • 3,608 SQ FT



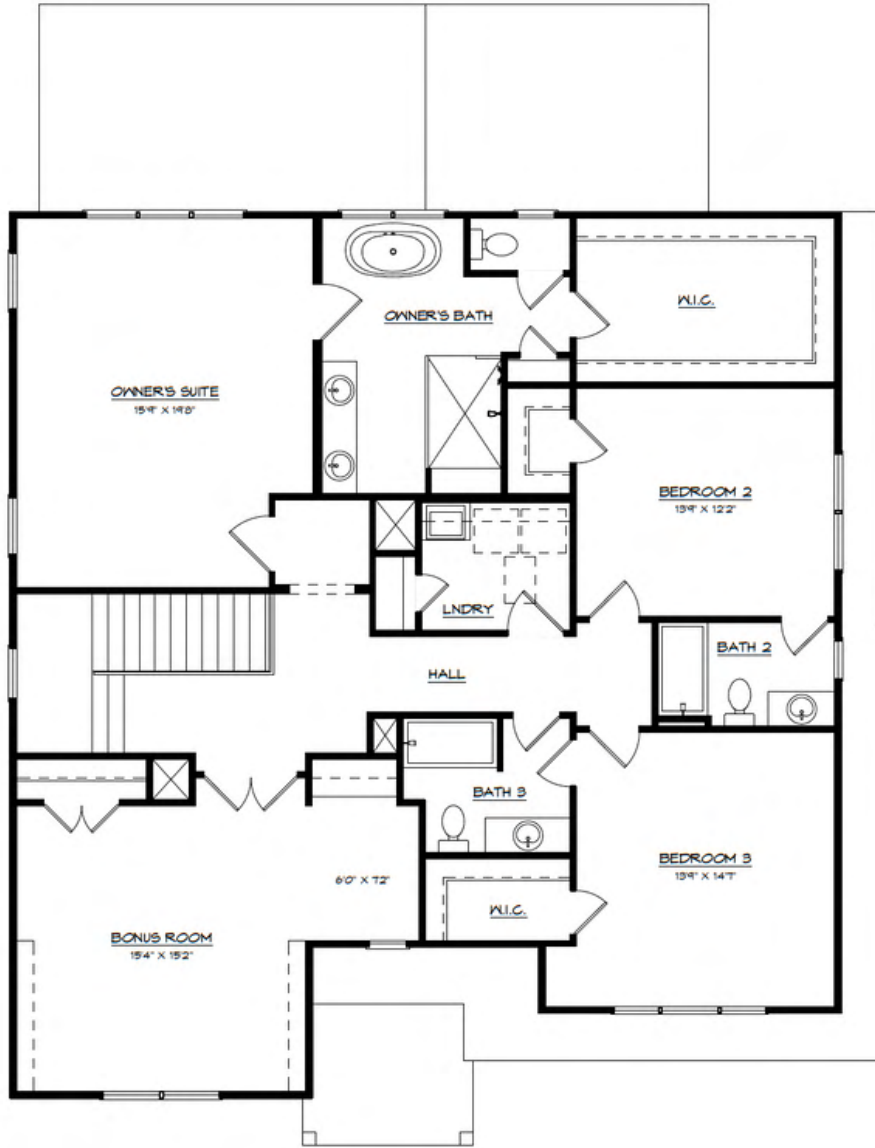
Square Footage

First Floor.....1,703 Sq. Ft.

Second Floor.....1,900 Sq. Ft.

1523 St George

4 BEDROOMS • 4 BATHROOMS • 3,608 SQ FT



Square Footage

First Floor.....1,703 Sq. Ft.

Second Floor.....1,900 Sq. Ft.

1527 St George (Lot 4)



BARRINGER
HOMES

980-284-7007

info@barringer-homes.com

1531 St George (Lot 5)



BARRINGER
HOMES

980-284-7007

info@barringer-homes.com

The Cottages At St George

SPECIFICATIONS

Interior Highlights

- Multiple functional floor plans available, with master up or down options. Several structural options are available
- 6.5" wide plank, engineered hardwoods throughout the first level, owner's suite, bonus room and upstairs hallways
- 10' ceilings with solid core 8' interior doors on first level, and 9' ceilings with 6'8" solid core doors on second level
- Designer kitchen cabinet layout w/ maple painted cabinets with shaker style doors.
- Stacked cabinetry to the ceiling in kitchen and 36" upper cabinets in laundry room
- Quartz and/or granite countertops, with various upgrades available
- Walk in pantry includes 5 rows of solid 16" MDF shelving
- Designer-selected tile packages throughout the home. Tile runs to the ceiling in owner's shower
- Spa-inspired owner's bath features large walk-in shower with handheld fixture in addition to the wall mounted shower head, free-standing soaking tub, and dual vanities with quartz countertops
- Moen plumbing fixtures in kitchen and bathrooms. Flo by Moen Smart Water System is an optional upgrade
- Speaker prewiring in the living room and cable prewiring in living room, bonus room, and all bedrooms
- Gas fireplace in living room
- Custom trim throughout the home including
 - 7 ¼" cove crown molding & baseboards on first floor
 - 5 ¼" cove crown molding baseboards on second floor
 - Decorative 7" headers on all windows and doors
- Nest learning thermostat on each level
- Ring doorbell

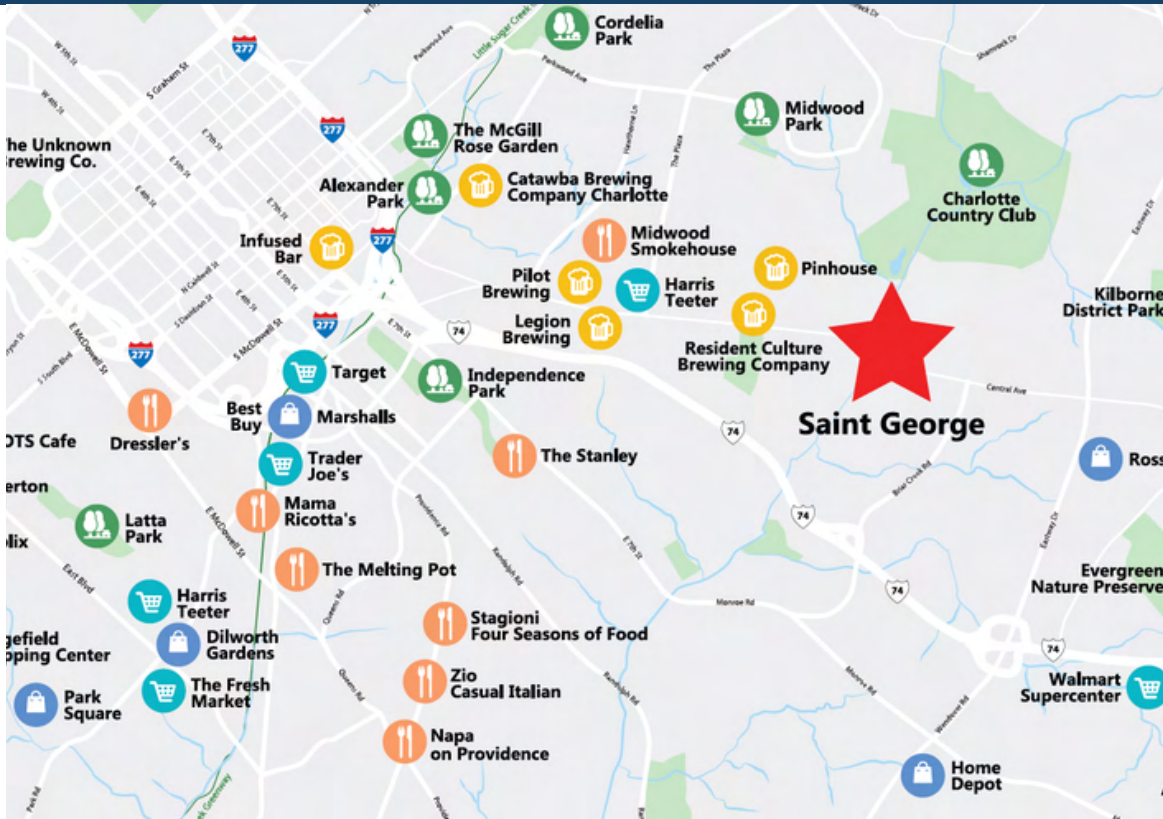


980-284-7007

info@barringer-homes.com

ST GEORGE DRIVE

AREA INFO



PLAZA MIDWOOD

From breweries to book shops, to BBQ joints and beyond, it's safe to say that Plaza Midwood has a place for everyone.

Located just minutes from Center City Charlotte, this quaint neighborhood has remained to keep it's historical charm while bringing in tons of new retail and restaurants. You'll enjoy strolling down the tree lined streets as you pass restaurants, parks & more.,. boast with tons of new retail and restaurants popping up.



Listed exclusively with
Realty ONE Group Select
249 Williamson Rd, Suite 200
 Mooresville, NC 28117

