

JUST  LISTED
2521 DANBURY STREET
COTSWOLD | CHARLOTTE NC



Bedrooms



Bathrooms



Car Garage



5,860 SQ FT



DESIGN INSPO

KRISTI SMITH | 252-917-1830
MICHELLE BASNETT | 704-450-6480

KRISTI@BARRINGER-HOMES.COM
MICHELLEB@BARRINGER-HOMES.COM

BARRINGER HOMES

www.Barringer-Homes.com

JUST LISTED

2521 DANBURY STREET

COTSWOLD | CHARLOTTE NC 28211

Nestled in charming Olde Cotswold, 2521 Danbury offers both luxury and comfort over an expansive 5,860 sqft of living space. Designed thoughtfully with family and entertainment in mind, this distinguished property boasts a harmonious blend of modern amenities and classic charm that appeals to a wide array of tastes and lifestyles.

As you step inside, you are greeted by an awe-inspiring arched entry way that leads to meticulously crafted living spaces, including five generously sized bedrooms and six full bathrooms. Each bedroom offers a unique feeling of comfort and privacy, with the primary and first-floor guest suites featuring vaulted ceilings that add to the grandeur of the home.

The heart of this home is undoubtedly its stunning kitchen, equipped with high-end Thermador appliances, and hidden doorways that reveal a customizable pantry or scullery, further enhanced with an additional beverage fridge & dishwasher. The downstairs flex room, complete with a wet bar and seamless access to a sprawling backyard, presents endless possibilities for entertainment and relaxation.

Luxury is redefined in the primary suite, showcasing a zero-entry steam shower that promises a spa-like experience every day. The convenience of having both upstairs and downstairs laundry rooms underscores the thoughtful design of this home, accommodating a seamless lifestyle.

Entertaining outdoors is a breeze with a large patio, a masonlite fireplace, outdoor heaters, and a grill station - all set to host memorable gatherings. The three-car garage and ample storage solutions highlight the property's practicality without sacrificing style.

With desirable amenities like custom trim details, a split-level bonus room, and numerous high-quality finishes throughout, this home is a sanctuary of sophistication and comfort. Discover your forever home at 2521 Danbury St, where every detail is curated for a distinguished living experience.

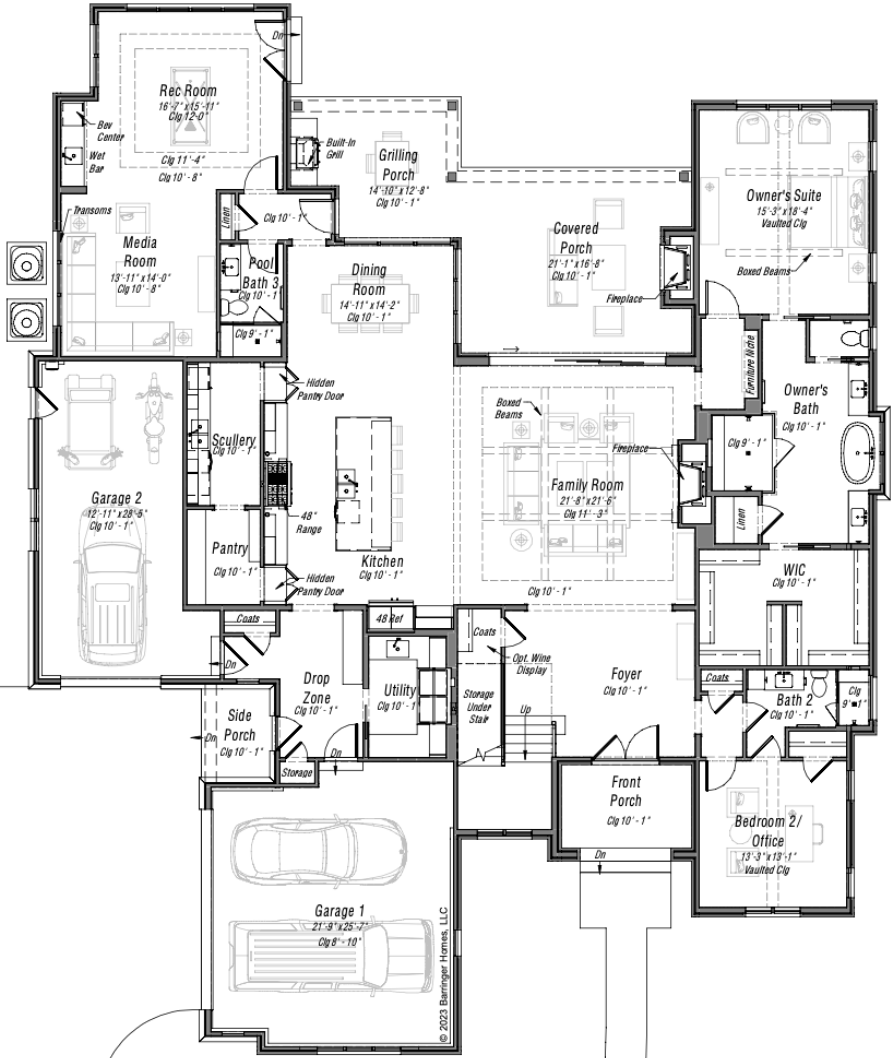
KRISTI SMITH | 252-917-1830
MICHELLE BASNETT | 704-450-6480

KRISTI@BARRINGER-HOMES.COM
MICHELLEB@BARRINGER-HOMES.COM

2521 DANBURY ELEVATIONS



MAIN LEVEL

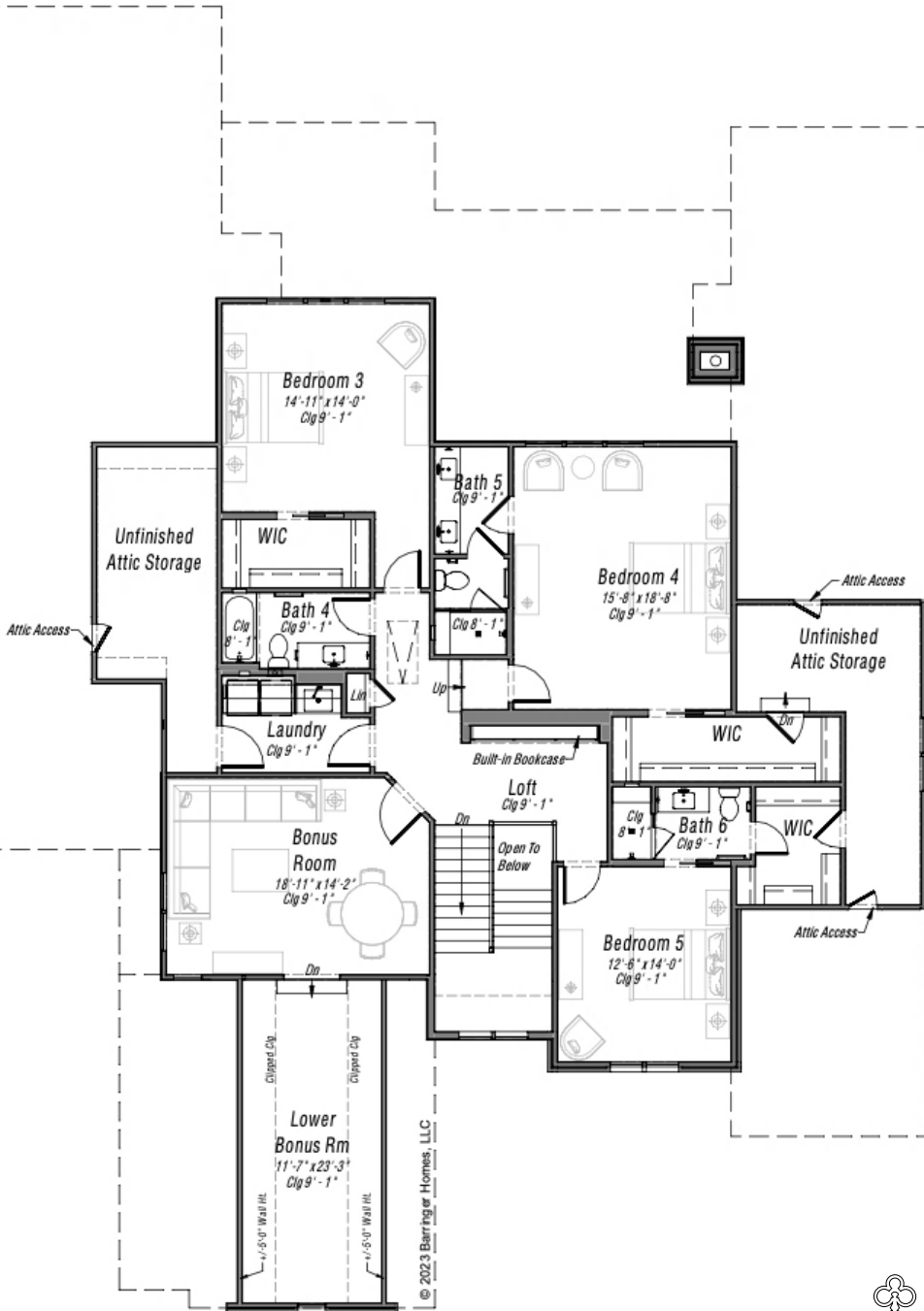


Main Level

MAIN LEVEL HLA - 3,696 SQFT



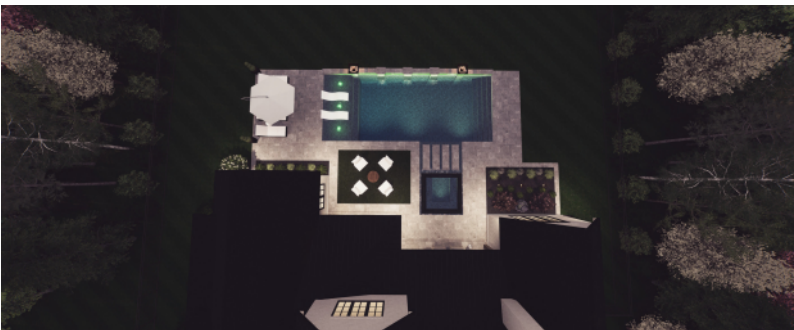
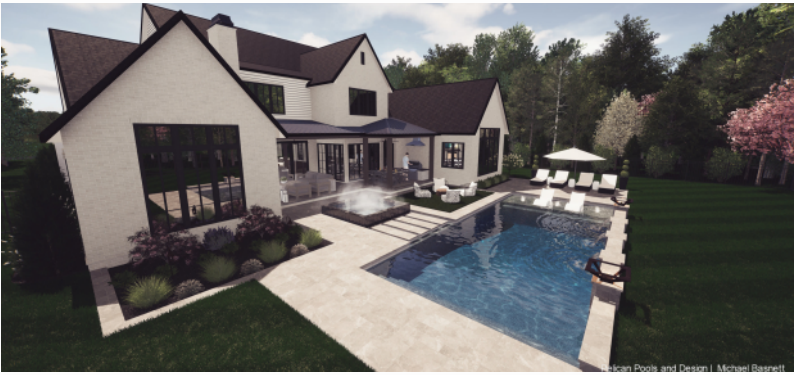
UPPER LEVEL



UPPER LEVEL HLA- 2,164 SQFT



POOL RENDERING



Designed by Michael Basnett | Pelican Pools and Design

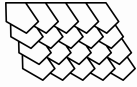


EXTERIOR FEATURES



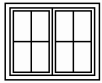
EXTERIOR MATERIALS

- Exterior Nantucket Brick | Painted SW 7042 Shoji White
- Fiber Cement Siding | Painted SW 7042 Shoji White
- Rustic Beige
- Front & Rear Porch Surface | Bluestone, Square Cut



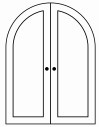
ROOFING

- Shingle Color | Certaineed Landmark Pro Max Def Mojave Tan
- Metal Accent Roof Color | Bronze
- Soffit/ Fascia/ Trim/ Columns | SW 7042 Shoji White
- Gutter Color | Bronze



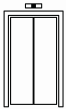
EXTERIOR WINDOWS

- Pella Lifestyle (Clad) Windows | Bronze Exterior/ White Interior
- SDL window grids per plan
- Window screens are available as an upgrade



EXTERIOR DOORS

- Front Door | Luxury Bronze Steel, Door, 8 Lt, Arch Top
- Garage Door Type | CHI Carriage House, Wood Overlay (11A)- see design intent for style
- Garage Door Color | Clear Coat Stain
- Exterior & Garage Service Door(s)- Insulated fiberglass painted SW 7048 Urbane Bronze



SLIDING GLASS DOORS

- Sliding glass door, per plan



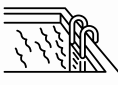
CEILING

- Front Porch Ceiling- Paint Grade T&G | Painted SW 9137 Niebla Azul
- Rear Patio Ceiling- Stain Grade T&G | Stained Minwax



PLUMBING

- Tankless hot water heater with recirculating pump



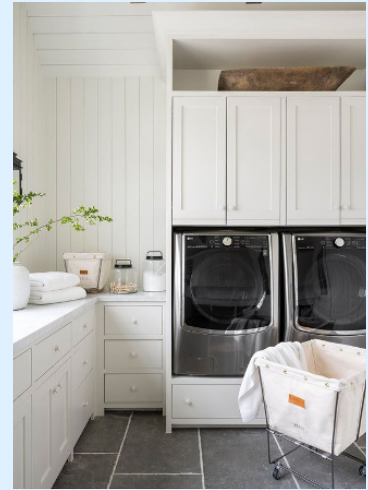
PREP COMPLETED FOR FUTURE POOL

- Gas stub out sized for 40,000 BTU heater
- 80 amp electrical circuit



INTERIOR SPECS

- Thermador Appliance Package | Including a 48" Range, Column Fridge (30") & Freezer (18"), panel ready & will match kitchen cabinetry style/color
- (2) Thermador Dishwashers
- (2) Beverage Fridges | (1) Scullery & (1) media room dry bar
- Kitchen layout curated for those who love to cook and entertain | cabinets extends to the 10' ceiling height, under-cabinet lighting & outlets are hidden for a clean sleek look & (2) hidden cabinet doors that lead to the pantry or to the scullery; perfect for hiding any mess from guest
- Pantry | customizable layout with allowance (dependent on time of construction)
- Scullery | complete w/ upper & lower cabinets, open shelving, microwave, bev fridge, dishwasher & large cast iron sink
- High end quartz countertops & Walker Zanger tile throughout
- 7 1/2" French Oak Hardwoods | Palmetto Road, Tuscany Collection color "Nola", | Carpet only slated for 2nd floor bonus room
- Main Level Media & Rec Room | includes wet bar & bev fridge, Pre-wired for surround sound
- (2) Guest baths on the Main Level
- Main Level Primary Suite | Vaulted ceiling with collar tie beam detail & oversized windows
- Primary Suite Bath | Separate vanities between a large soaking tub | Tile rug detail | zero entry shower w/ oversized arched niche detail |
- Primary Suite | Customizable layout with allowance (dependent on time of construction)
- Plumbing | Signature Hardware & Delta Brizo | Farmhouse sink in kitchen | Wall mounted faucet in Bath 2
- Family Room features 11" coffered ceiling detail
- Trim | Panel boarding w/ beaded inside detail in Foyer | Vertical shiplap on all walls in 2nd floor laundry
- Mason-Lite 44" gas interior fireplace | Mason-Lite 44" Wood burning fireplace w/ gas starter exterior fireplace
- Upstairs & Downstairs Laundry Room
- Upstairs bonus room & lower bonus room over garage
- 3 Secondary bedrooms on second level | option for bed 4 to function as a 2nd primary suite
- Tons of finished/unfinished storage
- \$40,000 Allowance towards closets & pantry
- \$45,000 Allowance towards Landscaping
- \$5,000 Allowance towards Fence



DESIGN INSPO

EXTERIOR



MAIN COLOR
BRICK* + SIDING + FASCIA
+ SOFFIT SHERWIN
WILLIAMS SHOJI WHITE
7042



ACCENT COLOR
BRICK + T&G INSIDE THE
PORCH SHERWIN
WILLIAMS NIEBLA AZUL
9137



FRONT ENTRY DOOR
& LITE ARCHITOP
FRENCH DOOR IN
LUXURY BRONZE



DOOR HARDWARE
BALDWIN DEL MAR
HANDLESIT WITH INTERIOR
ROUNDED KNOB VENETIAN
BRONZE



GARAGE DOOR
CHI CARRIAGE COLLECTION
WOOD OVERLAY (PA CLEAR
COAT STAIN BARNWOOD
WOOD)



CERTAINTED
LANDMARK PRO MAX
DEF MOJAVE TAN



BRONZE EXTERIOR CLAD
WINDOWS WITH PAINTED
WHITE INTERIOR- GRID
PER PLAN



GUTTERS
BRONZE FINISH
ALUMINUM MATERIAL K
STYLE

FRONT PORCH &
BACK PATIO PAVERS |
BLUESTONE SQUARE
CUT



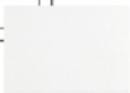
LIGHTING |



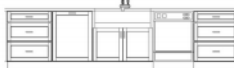
KITCHEN



CABINET |
SEA SALT CLASSIC



ISLAND |
SW 9139
DEBONAIR



COUNTERTOP |
BACKSPLASH
CAMBRIA LAKEDALE
QUARTZ



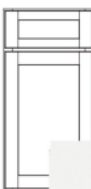
LIGHTING | ACCESSORIES



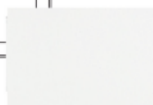
PLUMBING |



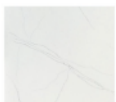
PRIMARY BATH



CABINET | SEA SALT
CLASSIC



COUNTERTOP |
CALACATTA
TREVI



TILE |



BATHROOM FLOOR &
SHOWER WALLS



SHOWER FLOOR



TILE RUG INTERIOR & BORDER

PLUMBING | POLISHED NICKEL



LIGHTING | ACCESSORIES

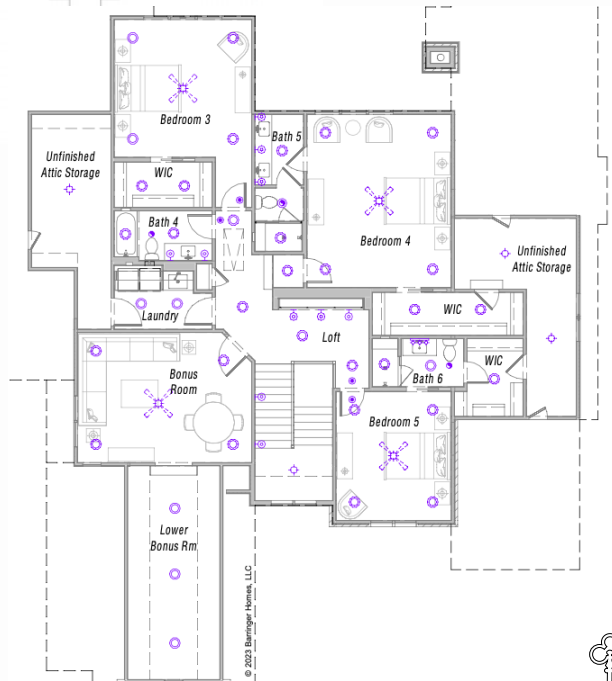


ELECTRICAL FLOOR PLAN



MAIN FLOOR

SECOND FLOOR





COMMUNITY

COTSWOLD | CHARLOTTE NC



Located at the intersection of Providence and Sharon Amity Road, the Cotswold neighborhood is one of the most desirable places to live in the Queen City. Offering you everything you need from local restaurants, boutique shops, parks, public and private schools. It's unique suburban neighborhood offers a quiet, welcoming charm without forgoing big-city conveniences.



ABOUT US

With a focus on quality craftsmanship and attention to detail, Barringer Homes is a rare luxury homebuilder that provides a high-end, curated product featuring open floor plans and top-of-the-line finishes to the most selective clients. We are a boutique builder with a dedicated and approachable team that strives to anticipate and accommodate a homebuyer's needs throughout the process from start to finish. Together we share the passion, vision, and expertise in providing a top-notch customer experience that culminates in the delivery of a house you love to come home to.