

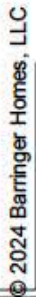
# 1200 ANDOVER | DESIGN INTENT



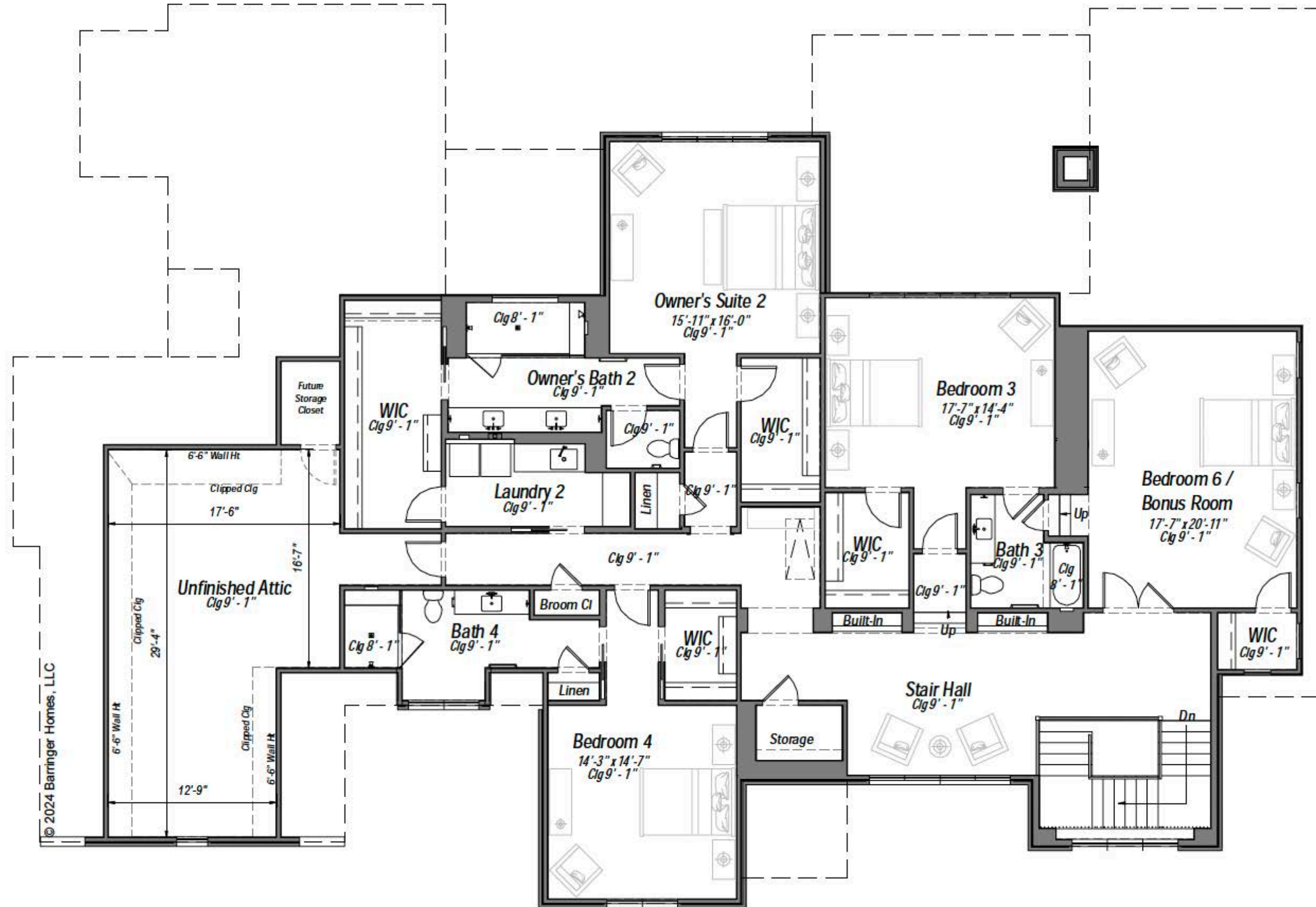
FOR VISUAL REPRESENTATION ONLY



# FLOOR PLAN

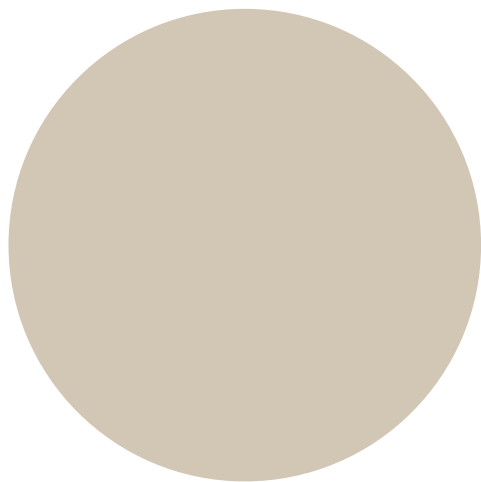


# 2ND FLOOR PLAN

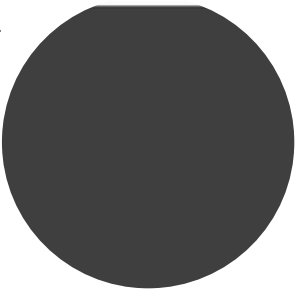




EXTERIOR



MAIN COLOR |  
BRICK\* + SIDING + FASCIA + SOFFIT +  
TRIM + COLUMNS  
SW MUSHROOM



BRONZE |  
METAL ROOF &  
GUTTERS



STONE |  
FON DU LAC TAILORED  
BLEND W/ WHITE MORTAR

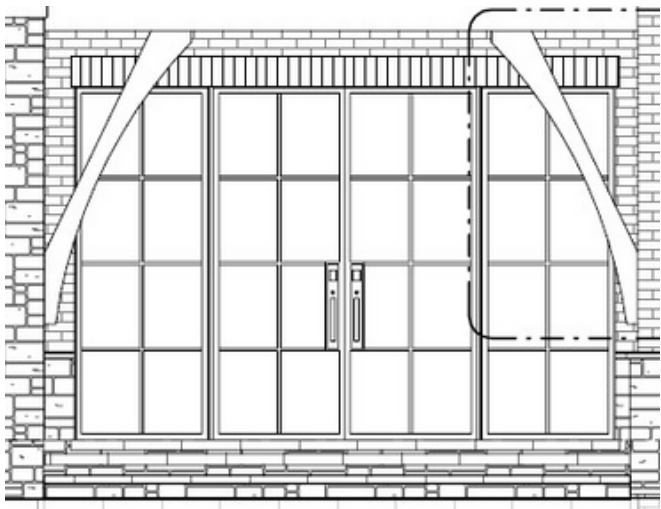


WEATHERED OAK STAIN |  
PORCH CEILINGS &  
BRACKETS/CORBELS

SHINGLES |



FRONT ENTRY DOOR | LUXURY BRONZE



WINDOWS | PELLA CLAD  
, BROWN EXTERIOR/WHITE INTERIOR



PORCH & PATIO SURFACES |



# KITCHEN

\*Cabinet shown for style only

Cabinets-inset



Hardware

Countertop & Backsplash



12" H + 3" ledge on range wall/ refrigerator wall full splash to upper cabinets

21" deep appliance cabinet  
w/  
pocket doors  
w/ hidden 30" built in  
Miele Coffee Machine



Lighting

Plumbing





# SCULLERY

\*Cabinet shown for style only



## Inset Cabinetry



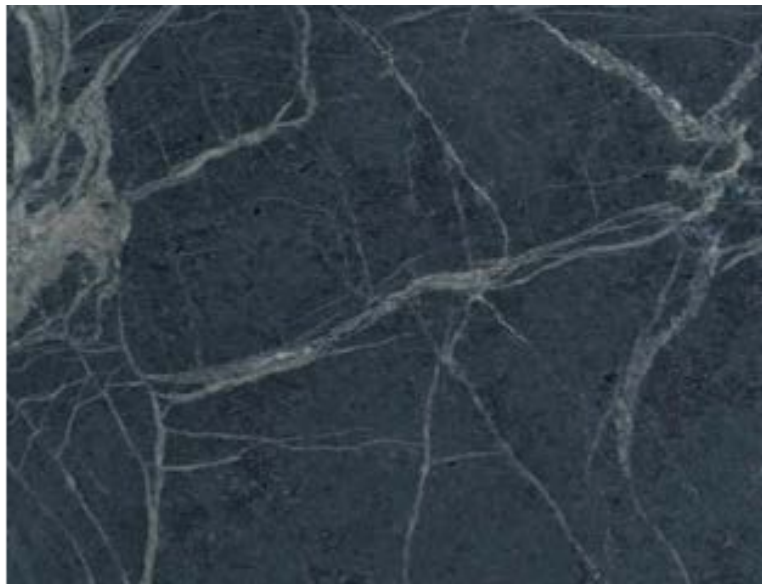
## Hardware



(for Visual Representation Only)



## Countertop

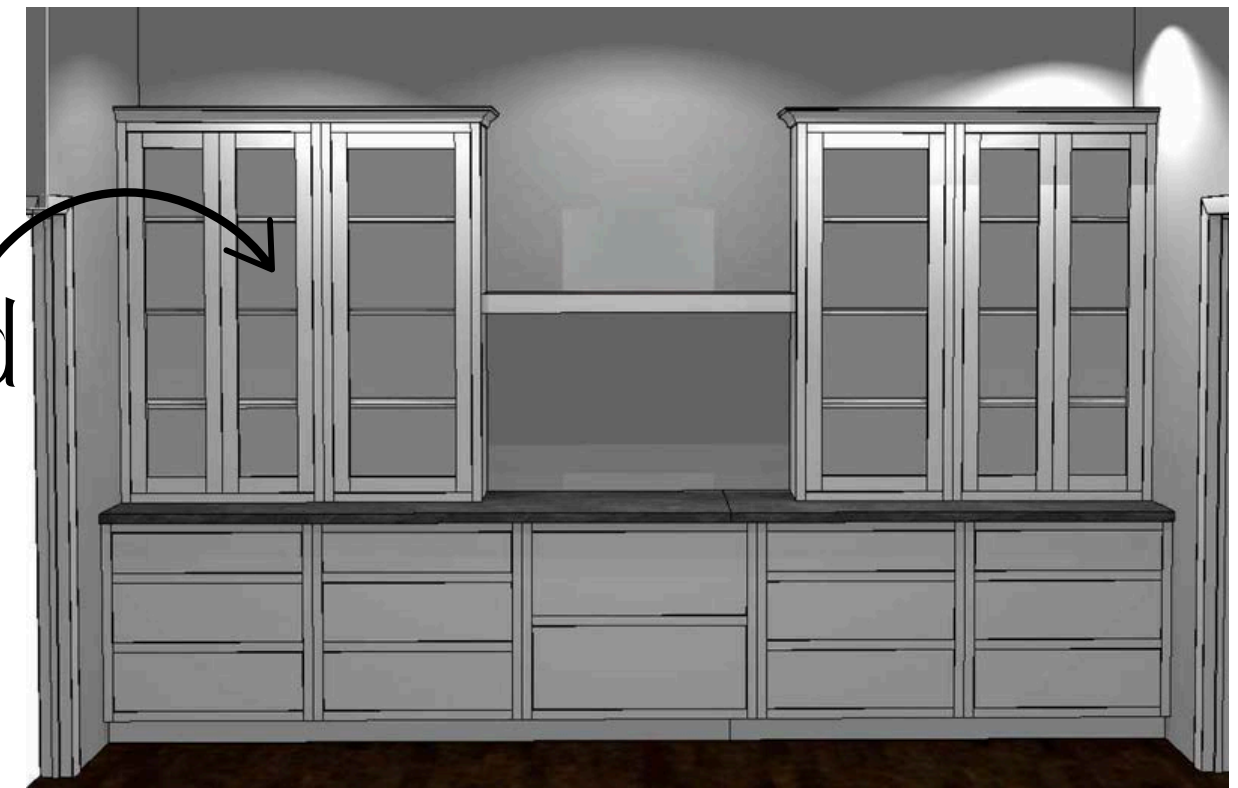


## Backsplash



## Plumbing

## Reeded Glass





# PRIMARY BATH DOWN

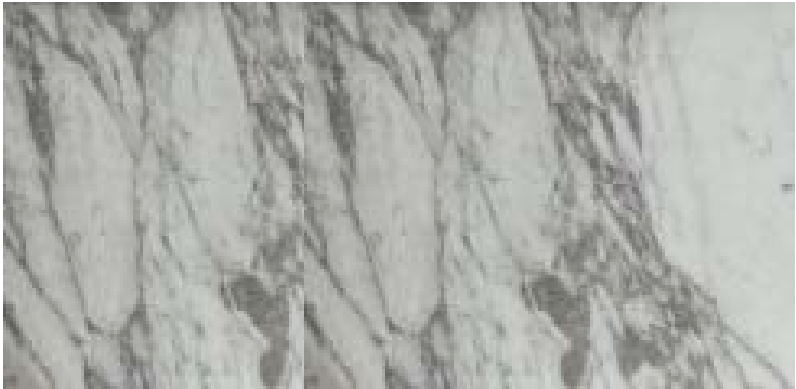
\*Cabinet shown for style only



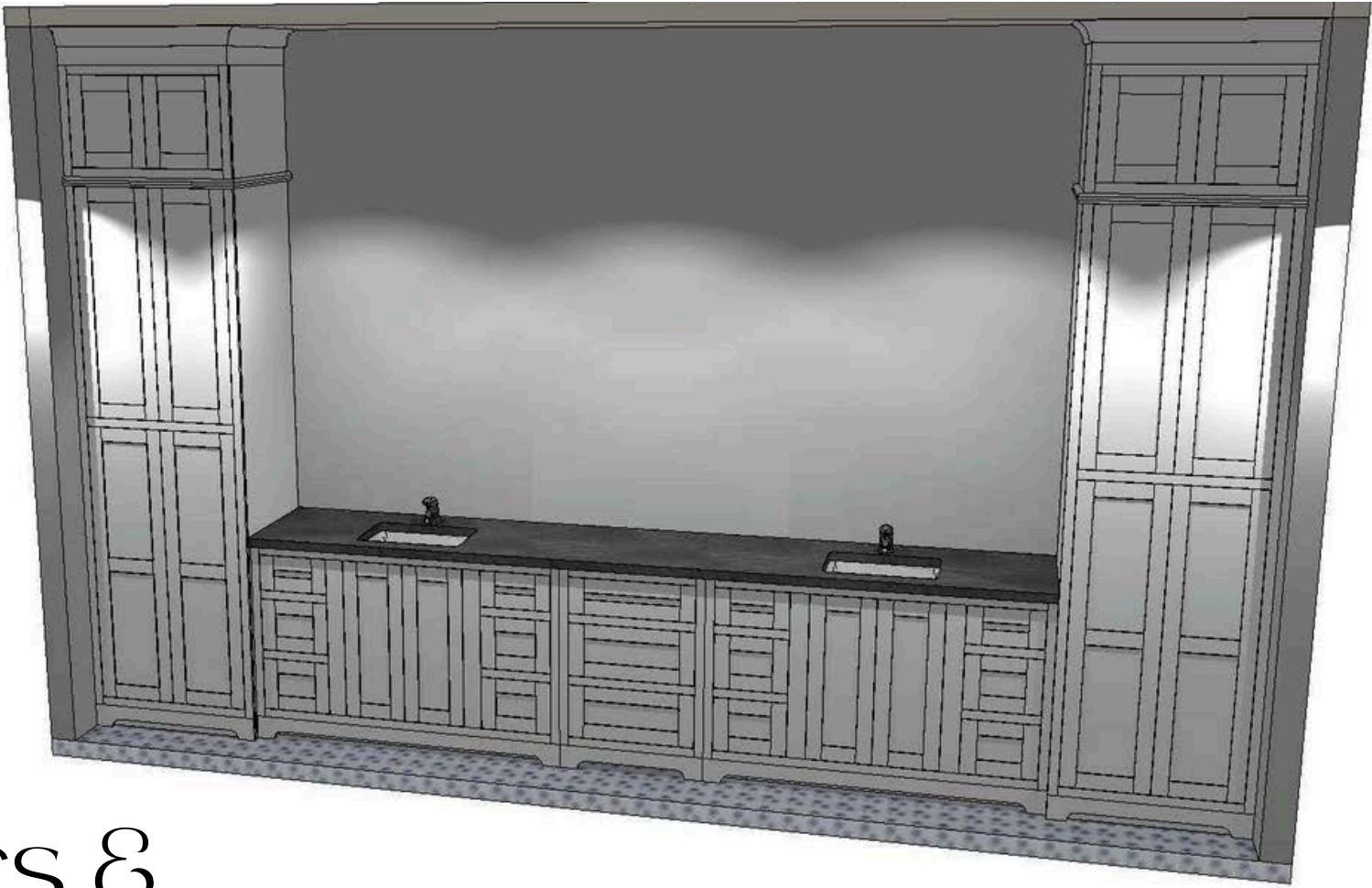
Cabinets- Inset



Countertop



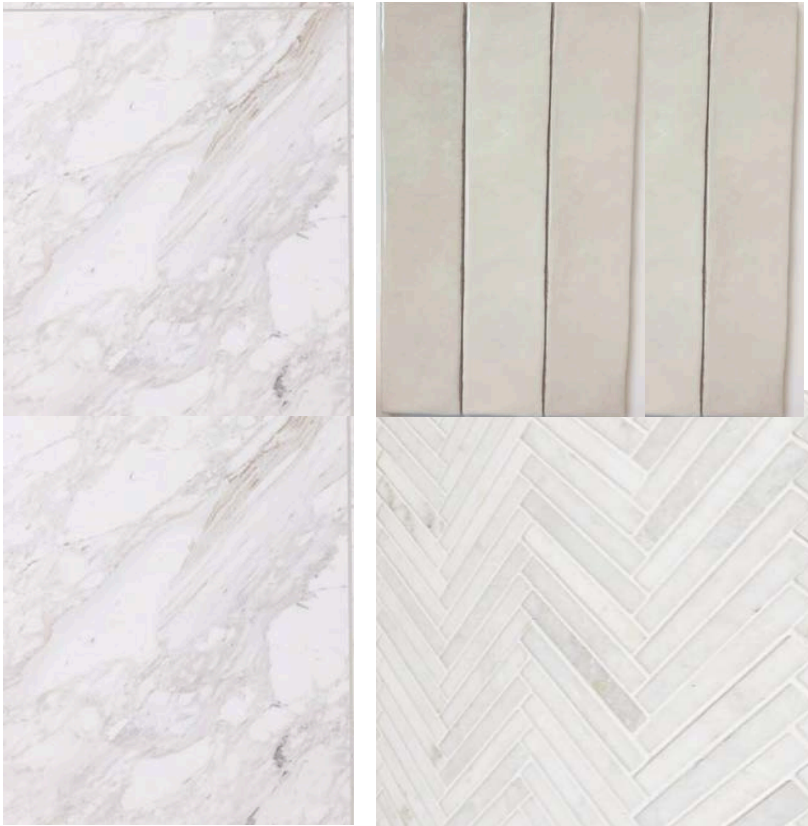
Hardware



Mirrors & Lighting



Tile



Plumbing



# PRIMARY BATH UP

\*Cabinet shown for style only



Cabinets- Inset



Countertop



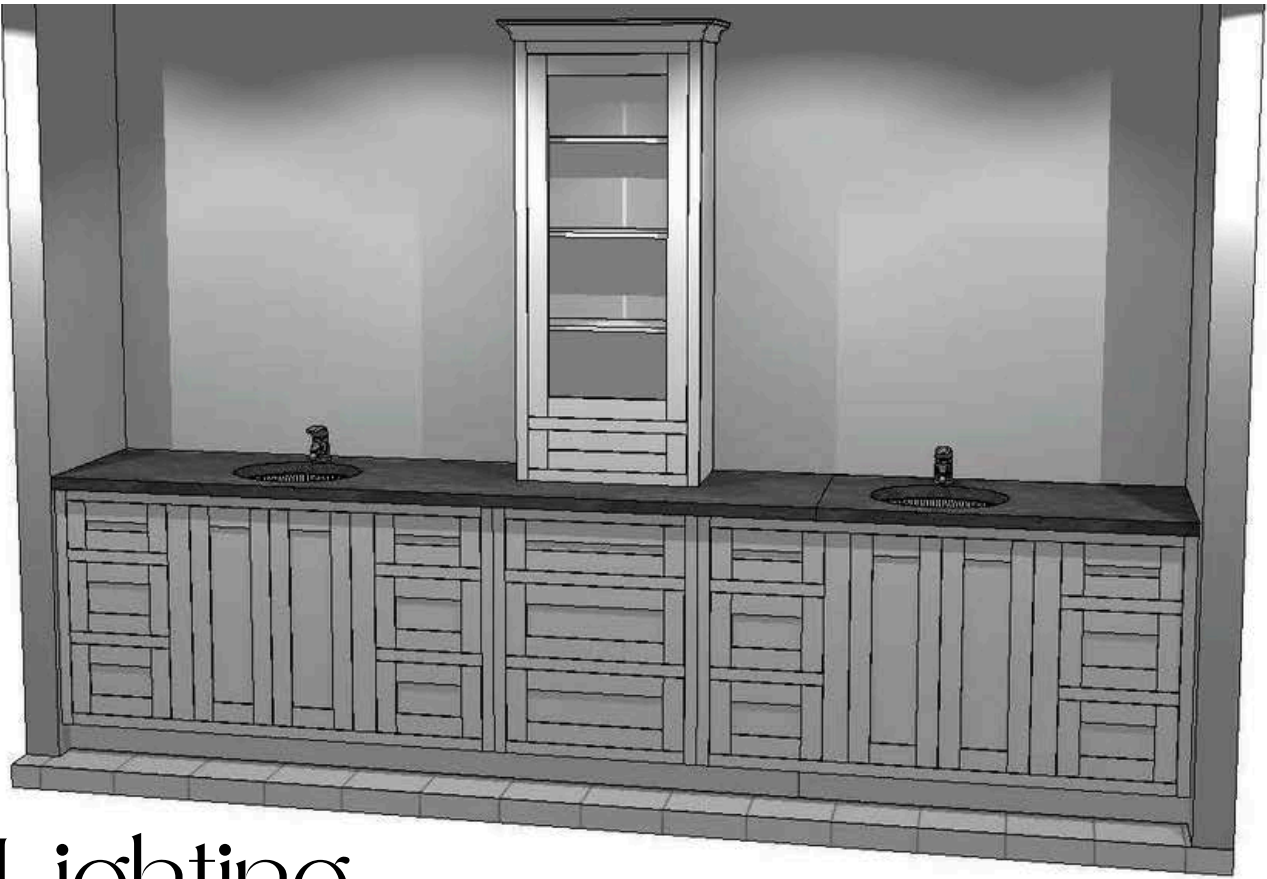
Hardware



Mirrors



Lighting



Tile



Shower Tile  
Baseboard

Plumbing





# BATH 2



Cabinets -  
Stained White  
Oak



Lighting

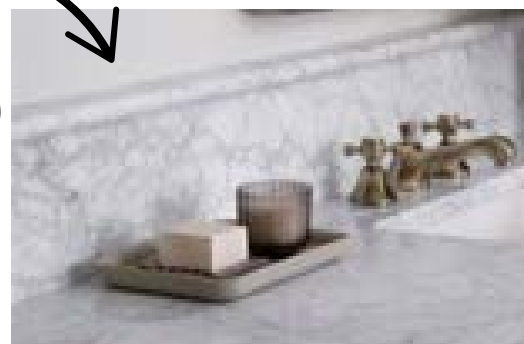


Plumbing



Countertop

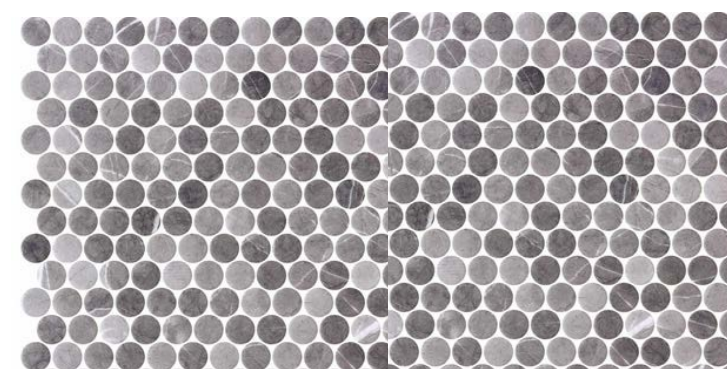
countertop  
detail



Mirrors



Tile



Hardware





# BATH 3-TUB



Cabinets



Lighting



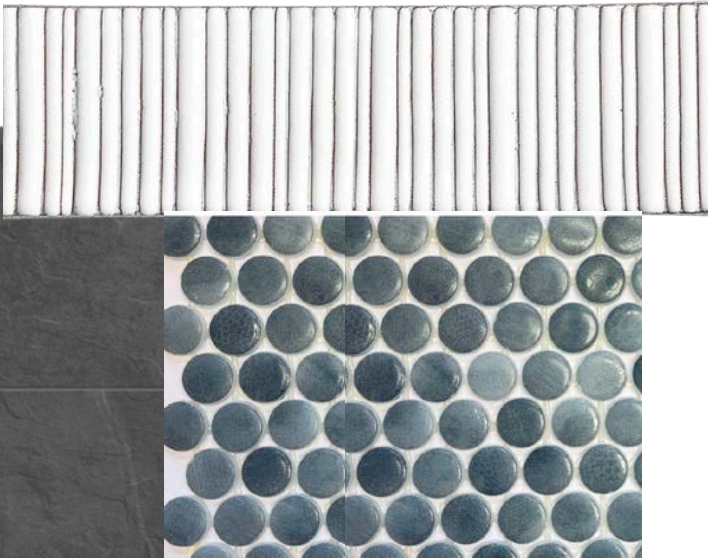
Plumbing



Countertops



Tile



Mirror



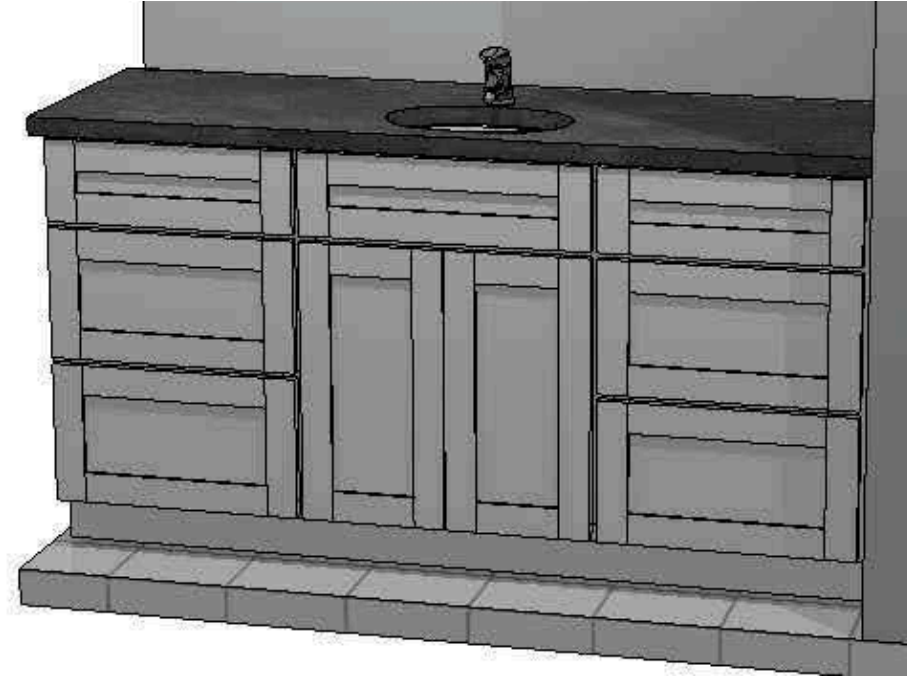
Hardware





# BATH 4

Cabinets



Lighting



Plumbing



Countertops



Tile



Mirror



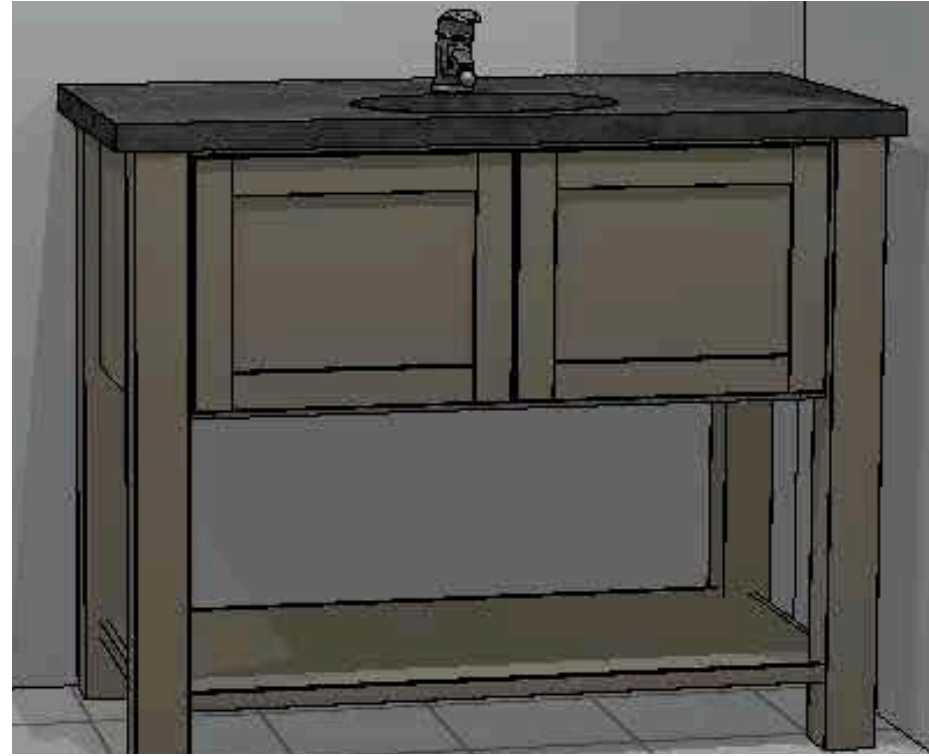
Hardware





# POOL<sup>KI</sup> BATH

Cabinets



Lighting



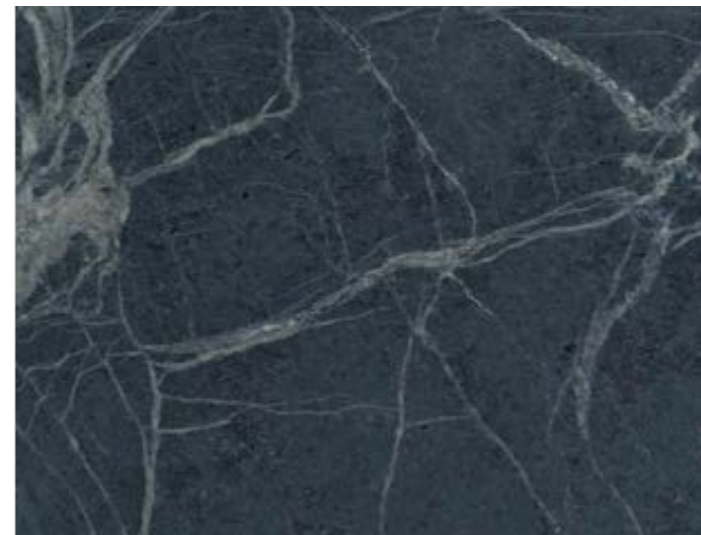
Plumbing



Hardware



Countertop



Mirror



Tile



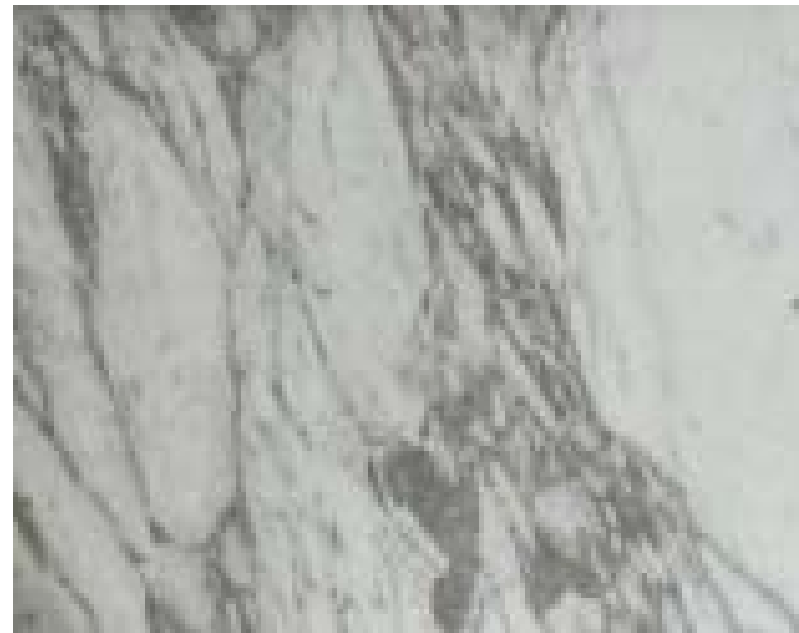


# WET<sup>Ki</sup> BAR



Cabinet

Countertop &  
Shelves



Plumbing



Appliance



Hardware





# LAUNDRY 1ST FLOOR



Cabinets

Countertop



Tile



Hardware



Plumbing



Lighting





# LAUNDRY 2

Cabinets



Plumbing



Hardware



Countertop



Tile



Lighting





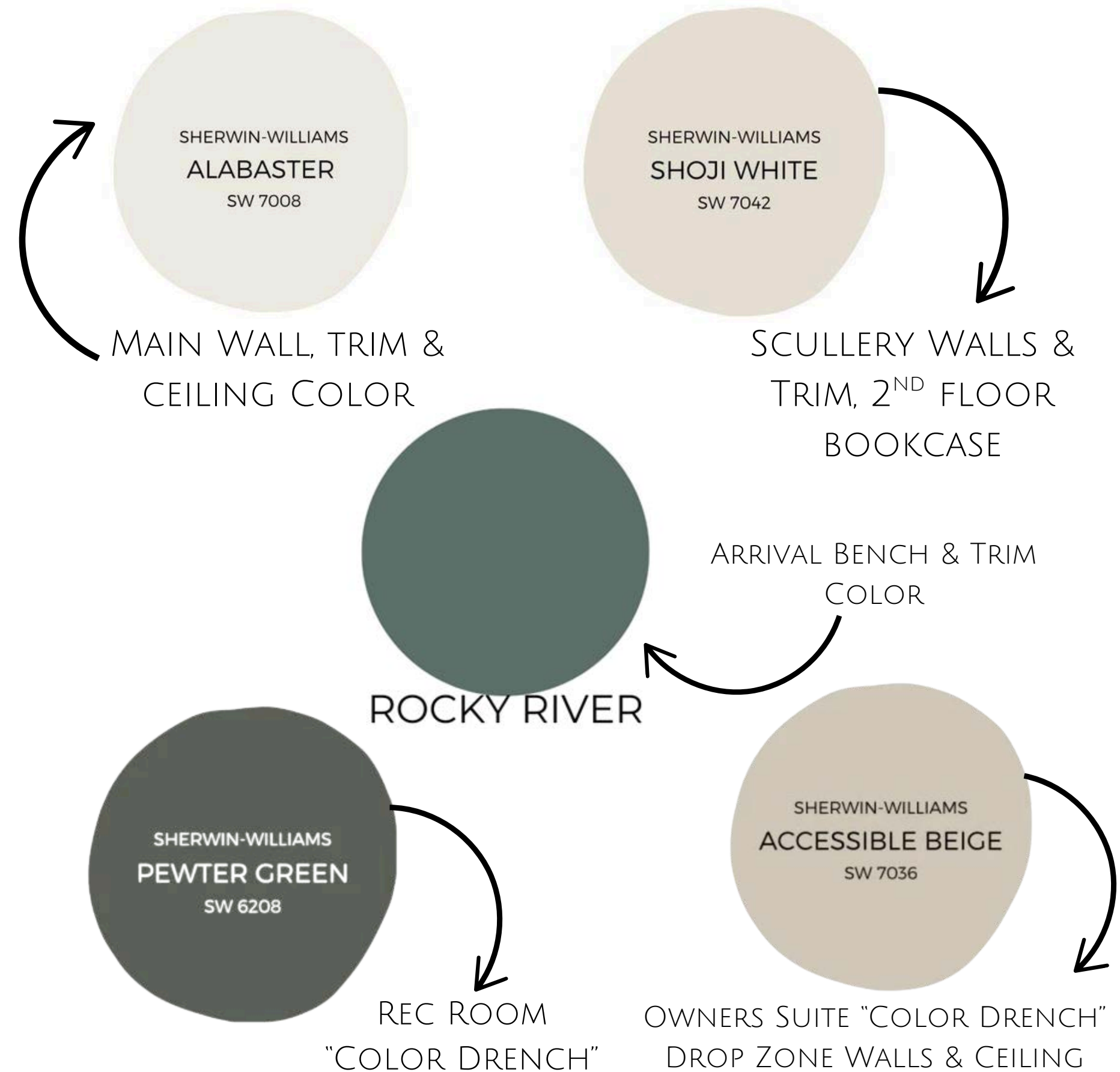
# INTERIOR DETAILS

## Hardwoods

FLOORING | PALMETTO ROAD - ASHEVILLE  
COLLECTION - MAGGIE VALLEY  
9.4" WIDE AGED FRENCH OAK



## Interior Paint

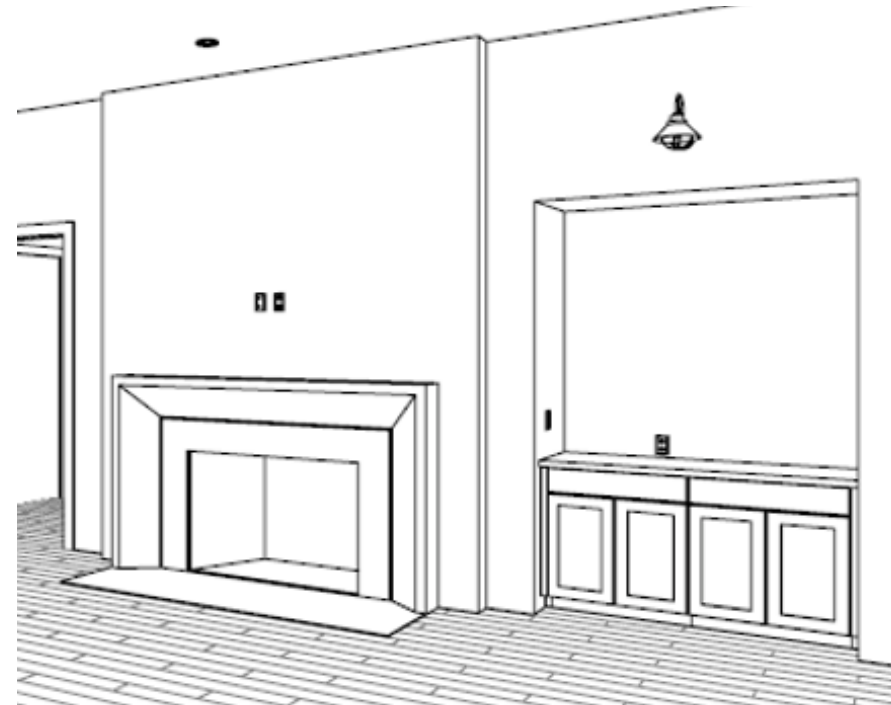




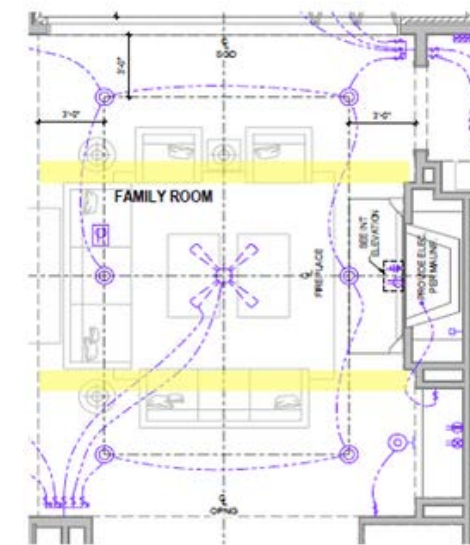
# FAMILY ROOM DETAILS

## Fireplace

FIREPLACE SURROUND,  
MANTEL & HEARTH |  
CALACATTA VAGLI MARBLE,  
HONED



## Lighting



## Ceiling Trim

LIVING ROOM TRIM |  
(2) WHITE OAK  
BEAMS, 1X6 SIDES &  
1X10 BOTTOM



Built In Design  
Inspiration

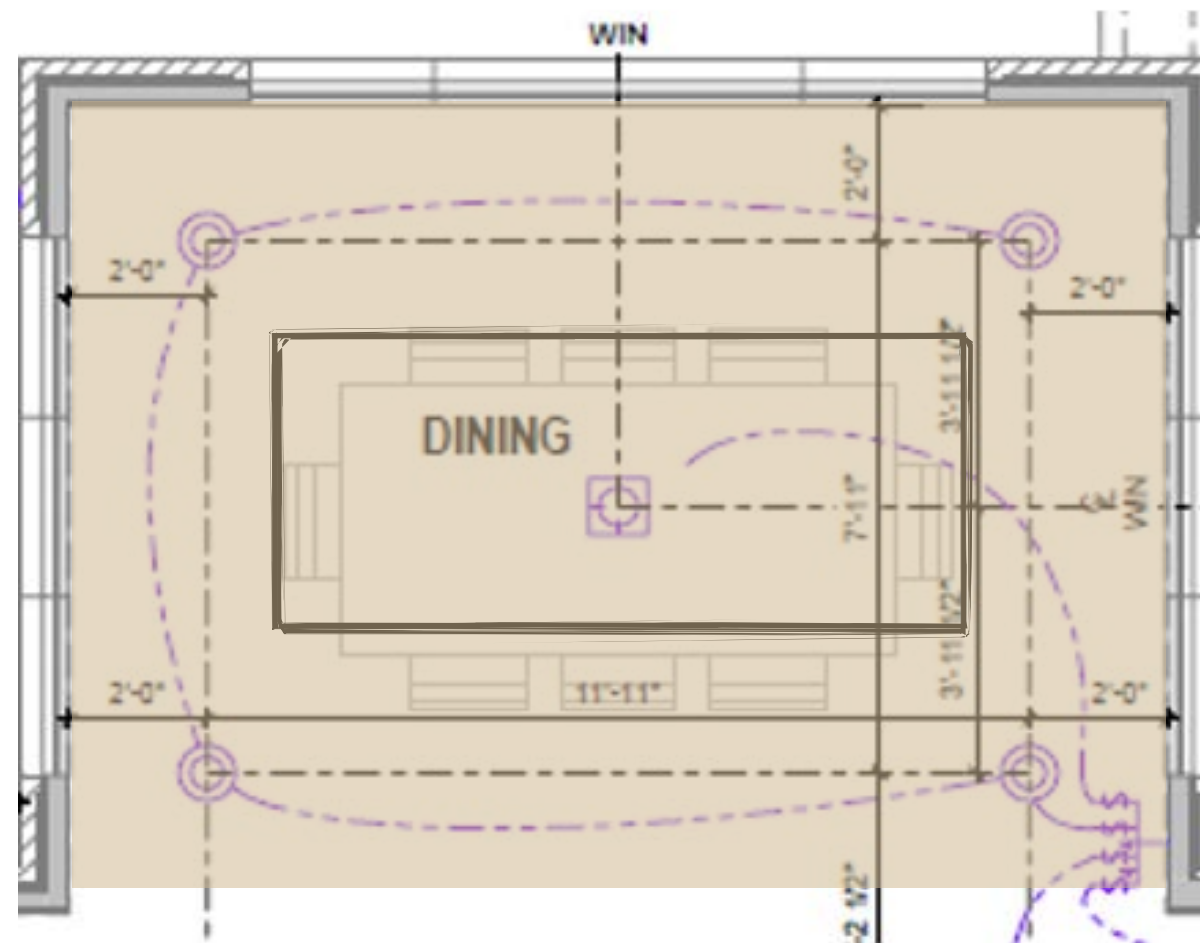


# DINING ROOM DETAILS

## Lighting



## Ceiling Treatment



TRIM TO BE - 1 X 6 WHITE  
OAK TONGUE & GROOVE

## Inspiration





# REC ROOM DETAILS

Cabinet



Countertop

2 matching  
marble  
shelves



Tray Ceiling  
Trim



1X6 PAINT GRADE  
SHIPLAP & 1X6 STAINED  
WHITE OAK BORDER



Hardwoods



Lighting

SHERWIN-WILLIAMS  
PEWTER GREEN  
SW 6208





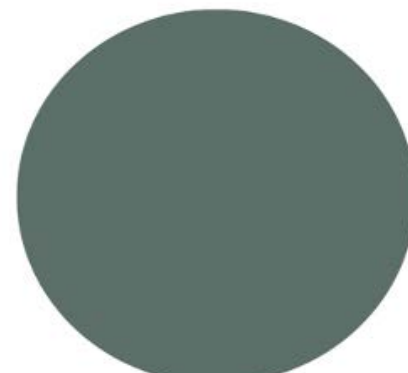
# DROP ZONE

## Drop Zone Built Ins

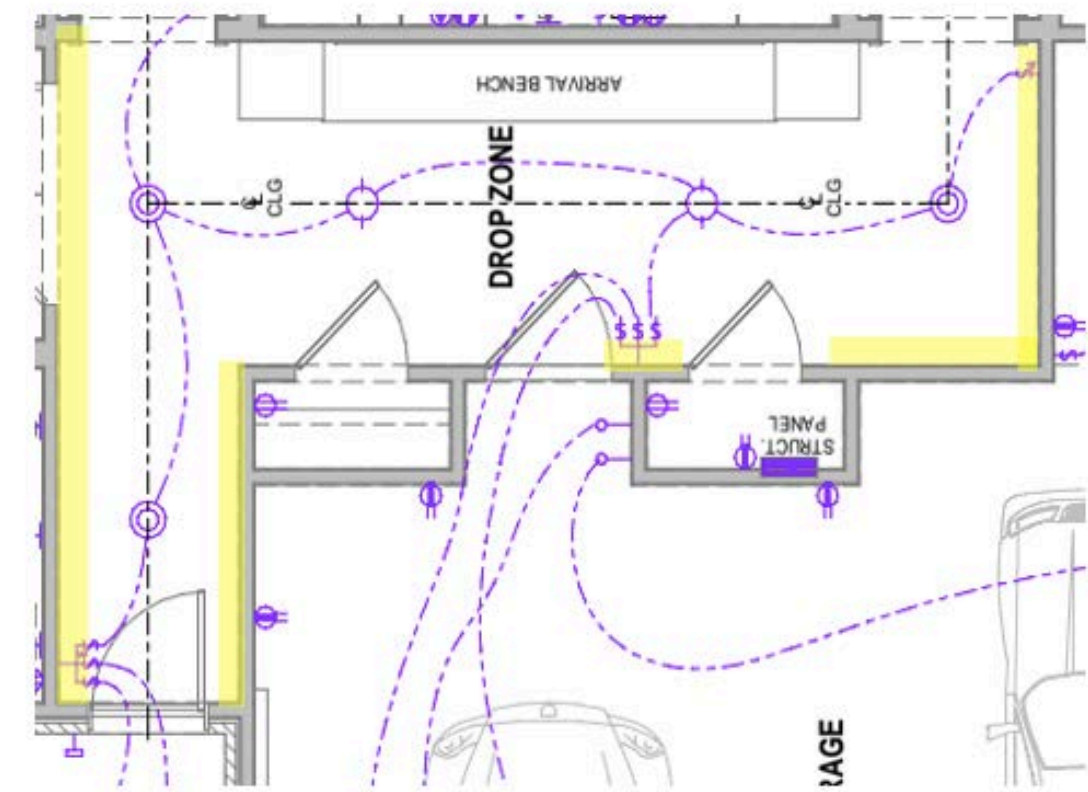
LOCKERS WILL BE FLOOR TO CEILING  
W/, FURNITURE BASE MOLDING,  
INSET DOORS & DRAWERS

BETWEEN LOCKERS WILL BE A  
WHITE OAK STAINED BENCH  
SEAT TO RUN ALL THE WAY  
ACROSS ENTIRE SPACE

## Drop Zone & Wall Trim Paint



ROCKY RIVER



## Wall Trim

VERTICAL SHIPLAP  
WAINSCOTTING AT 60" H,  
WITH 1X CAP AT TOP,  
INCLUDE BASEBOARDS &  
CROWN



## Lighting





# POOL DESIGN



VIPSE

Pelican Pools and Design | Michael Basnett

BARRINGER HOMES



# SPECIALITY LIGHTING

## Interior Stair Railing



## Toe Kick Lighting -Kitchen Perimeter Only & Primary Vanity



## Rec Room Wet Bar illuminating lighting





# CABANA<sub>KI</sub> OPTION

